



THE
RESERVE
RESIDENCES

TREETOPS

FLOOR PLANS

THE HEART OF BUKIT TIMAH








Welcome to the heart of Bukit Timah, a prestigious and sought-after location that embodies the best of urban living. This prime estate is known for its upscale residences, top-tier schools, and abundance of greenery, offering an unparalleled lifestyle that combines the convenience of modern amenities with the serenity of lush greenery.

SCHEMATIC DIAGRAM

LEGEND	
*	Mirror Layout
▲	Acoustic Ceiling
#	Balcony Screen
■	Acoustic Façade Treatment with Fins and/or Ledges
All units will be fitted with window restrictor.	








THE RESERVE RESIDENCES

-  1-Bedroom Type A1, A2
-  2-Bedroom Type B1-B7A
-  2-Bedroom + Study Type B8-B9A
-  3-Bedroom Type C1-C4
-  3-Bedroom + Study Type C5

HORIZON

-  3-Bedroom Type C9-C10P
-  4-Bedroom Type D2-D4

TREETOPS

-  4-Bedroom + Study Type G1
-  4-Bedroom + Study (Sky Terrace) Type D5
-  4-Bedroom + Study (Duplex) Type G2
-  5-Bedroom Type G3, G4
-  5-Bedroom (Sky Terrace) Type E1-E3
-  5-Bedroom (Duplex) Type G5
-  5-Bedroom (Penthouse) Type P1-P4

9 JALAN ANAK BUKIT

11 JALAN ANAK BUKIT

UNIT / FLOOR	80	81	82	83	84	85	86	87	88	89	90	91	92	93	94	95	96	97	98	99	UNIT / FLOOR	
17	SKY TERRACE											SKY TERRACE								17		
16	A1	A1*	C4▲	C4**▲	A1	A2	A2*	B3*	C9	B7	A1*	A1	C2	C10	B3	A2	A2*	C3	D2▲	B1	16	
15	A1	A1*	C4▲	C4**▲	A1	A2	A2*	B3*	C9	B7	A1*	A1	C2	C10	B3	A2	A2*	C3	D2▲	B1	15	
14	A1	A1*	C4▲	C4**▲	A1	A2	A2*	B3*	C9	B7	A1*	A1	C2	C10	B3	A2	A2*	C3	D2▲	B1	14	
13	A1	A1*	C4▲	C4**▲	A1	A2	A2*	B3*	C9	B7	A1*	A1	C2	C10	B3	A2	A2*	C3	D2▲	B1	13	
12	A1	A1*	C4▲	C4**▲	A1	A2	A2*	B3*	C9	B7	A1*	A1	C2	C10	B3	A2	A2*	C3	D2▲	B1	12	
11	A1	A1*	C4▲	C4**▲	A1	A2	A2*	B3*	C9	B7	A1*	A1	C2	C10	B3	A2	A2*	C3	D2▲	B1	11	
10	A1	A1*	C4▲	C4**▲	A1	A2	A2*	B3*	C9	B7	A1*	A1	C2	C10	B3	A2	A2*	C3	D2▲	B1	10	
9	A1	A1*	C4▲	C4**▲	A1	A2	A2*	B3*	C9	B7	A1*	A1	C2	C10	B3	A2	A2*	C3	D2▲	B1	9	
8	A1	A1*	C4▲	C4**▲	A1	A2	A2*	B3*	C9	B7	A1*	A1	C2	C10	B3	A2	A2*	C3	D2▲	B1	8	
7	A1	A1*	C4▲	C4**▲	A1	A2	A2*	B3*	C9	B7	A1*	A1	C2	C10	B3	A2	A2*	C3	D2▲	B1	7	
6	A1	A1*	C4▲	C4**▲	A1	A2	A2*	B3*	C9	B7	A1*	A1	C2	C10	B3	A2	A2*	C3	D2▲	B1	6	
5	LANDSCAPE		C4P▲	C4**▲	A1	LANDSCAPE		B3*	C9	LANDSCAPE		LANDSCAPE		C10	B3	LANDSCAPE		G2	D2P▲	LANDSCAPE		5
4	LANDSCAPE / RESIDENTIAL CARPARK			G1▲		LANDSCAPE / RESIDENTIAL CARPARK		G3		LANDSCAPE / RESIDENTIAL CARPARK		LANDSCAPE / RESIDENTIAL CARPARK		G4		LANDSCAPE / RESIDENTIAL CARPARK		G2		LANDSCAPE / RESIDENTIAL CARPARK		4
3	RETAIL											BUS INTERCHANGE								3		
2	RETAIL											BUS INTERCHANGE								2		
1	RETAIL											RETAIL								1		
B1	RETAIL											RETAIL								B1		
B1M	RETAIL											RETAIL								B1M		

Continued on next page

UNIT / FLOOR	100	101	102	103	104	105	106	107	108	109	110	111	112	113	114	115	116	117	UNIT / FLOOR
33	ROOF TERRACE									ROOF TERRACE									33
32	P4		WATER TANK			P1 ▲ # ■				P2 ▲ # ■			WATER TANK		P3 ▲ # ■		P3 ▲ # ■		32
31	B5A ▲ # ■	B9A ▲ # ■	D2	B4A	B8 *		C10 ▲ # ■	B6 ▲ # ■	B5A ▲ # ■	C5 ▲ # ■	C9 ▲ # ■		B8	B5A *	D4 ▲ # ■	D4 ▲ # ■	C1 ▲ # ■	31	
30	B5A ▲ # ■	B9A ▲ # ■	D2	B4A	B8 *	C2A	C10 ▲ # ■	B6 ▲ # ■	B5A ▲ # ■	C5 ▲ # ■	C9 ▲ # ■	B7A	B8	B5A *	D4 ▲ # ■	D4 ▲ # ■	C1 ▲ # ■	30	
29	B5A ▲ # ■	B9A ▲ # ■	D2	B4A	B8 *	C2A	C10 ▲ # ■	B6 ▲ # ■	B5A ▲ # ■	C5 ▲ # ■	C9 ▲ # ■	B7A	B8	B5A *	D4 ▲ # ■	D4 ▲ # ■	C1 ▲ # ■	29	
28	B5A ▲ # ■	B9A ▲ # ■	D2	B4A	B8 *	C2A	C10 ▲ # ■	B6 ▲ # ■	B5A ▲ # ■	C5 ▲ # ■	C9 ▲ # ■	B7A	B8	B5A *	D4 ▲ # ■	D4 ▲ # ■	C1 ▲ # ■	28	
27	B5A ▲ # ■	B9A ▲ # ■	D2	B4A	B8 *	C2A	C10 ▲ # ■	B6 ▲ # ■	B5A ▲ # ■	C5 ▲ # ■	C9 ▲ # ■	B7A	B8	B5A *	D4 ▲ # ■	D4 ▲ # ■	C1 ▲ # ■	27	
26	B5A ▲ # ■	B9A ▲ # ■	D2	B4A	B8 *	C2A	C10 ▲ # ■	B6 ▲ # ■	B5A ▲ # ■	C5 ▲ # ■	C9 ▲ # ■	B7A	B8	B5A *	D4 ▲ # ■	D4 ▲ # ■	C1 ▲ # ■	26	
25	B5A ▲ # ■	B9A ▲ # ■	D2	B4A	B8 *	C2A	C10 ▲ # ■	B6 ▲ # ■	B5A ▲ # ■	C5 ▲ # ■	C9 ▲ # ■	B7A	B8	B5A *	D4 ▲ # ■	D4 ▲ # ■	C1 ▲ # ■	25	
24	B5A ▲ # ■	B9A ▲ # ■	D2	B4A	B8 *	C2A	C10 ▲ # ■	B6 ▲ # ■	B5A ▲ # ■	C5 ▲ # ■	C9 ▲ # ■	B7A	B8	B5A *	D4 ▲ # ■	D4 ▲ # ■	C1 ▲ # ■	24	
23	B5A ▲ # ■	B9A ▲ # ■	D2	B4A	B8 *	C2A	C10 ▲ # ■	B6 ▲ # ■	B5A ▲ # ■	C5 ▲ # ■	C9 ▲ # ■	B7A	B8	B5A *	D4 ▲ # ■	D4 ▲ # ■	C1 ▲ # ■	23	
22	B5A ▲ # ■	B9A ▲ # ■	D2	B4A	B8 *	C2A	C10 ▲ # ■	B6 ▲ # ■	B5A ▲ # ■	C5 ▲ # ■	C9 ▲ # ■	B7A	B8	B5A *	D4 ▲ # ■	D4 ▲ # ■	C1 ▲ # ■	22	
21	B5A ▲ # ■	B9A ▲ # ■	D2	B4A	B8 *	C2A	C10 ▲ # ■	B6 ▲ # ■	B5A ▲ # ■	C5 ▲ # ■	C9 ▲ # ■	B7A	B8	B5A *	D4 ▲ # ■	D4 ▲ # ■	C1 ▲ # ■	21	
20	B5A ▲ # ■	B9A ▲ # ■	D2	B4A	B8 *	C2A	C10 ▲ # ■	B6 ▲ # ■	B5A ▲ # ■	C5 ▲ # ■	C9 ▲ # ■	B7A	B8	B5A *	D4 ▲ # ■	D4 ▲ # ■	C1 ▲ # ■	20	
19	B5A ▲ # ■	B9A ▲ # ■	D2	B4A	B8 *	C2A	C10 ▲ # ■	B6 ▲ # ■	B5A ▲ # ■	C5 ▲ # ■	C9 ▲ # ■	B7A	B8	B5A *	D4 ▲ # ■	D4 ▲ # ■	C1 ▲ # ■	19	
18	B5A ▲ # ■	B9A ▲ # ■	D2	B4A	B8 *	C2A	C10 ▲ # ■	B6 ▲ # ■	B5A ▲ # ■	C5 ▲ # ■	C9 ▲ # ■	B7A	B8	B5A *	D4 ▲ # ■	D4 ▲ # ■	C1 ▲ # ■	18	
17	SKY TERRACE		D5	SKY TERRACE			E3 ▲ # ■		SKY TERRACE	SKY TERRACE		E2 ▲ # ■		SKY TERRACE		E1 ▲ # ■	E1 ▲ # ■	SKY TERRACE	17
16	B2 * ■	B9 ■	D2	B4	B5 *	C2	C10 ▲ #	B3 ■	B2 ■	B2 * ▲ # ■	B3 * ▲ # ■	C9 ▲ # ■	B7	B5	B5 *	D4 ▲ # ■	D4 ▲ # ■	B2 ▲ # ■	16
15	B2 * ■	B9 ■	D2	B4	B5 *	C2	C10 ▲ #	B3 ■	B2 ■	B2 * ▲ # ■	B3 * ▲ # ■	C9 ▲ # ■	B7	B5	B5 *	D4 ▲ # ■	D4 ▲ # ■	B2 ▲ # ■	15
14	B2 * ■	B9 ■	D2	B4	B5 *	C2	C10 ▲ #	B3 ■	B2 ■	B2 * ▲ # ■	B3 * ▲ # ■	C9 ▲ # ■	B7	B5	B5 *	D4 ▲ # ■	D4 ▲ # ■	B2 ▲ # ■	14
13	B2 * ■	B9 ■	D2	B4	B5 *	C2	C10 ▲ #	B3 ■	B2 ■	B2 * ▲ # ■	B3 * ▲ # ■	C9 ▲ # ■	B7	B5	B5 *	D4 ▲ # ■	D4 ▲ # ■	B2 ▲ # ■	13
12	B2 * ■	B9 ■	D2	B4	B5 *	C2	C10 ▲ #	B3 ■	B2 ■	B2 * ▲ # ■	B3 * ▲ # ■	C9 ▲ # ■	B7	B5	B5 *	D4 ▲ # ■	D4 ▲ # ■	B2 ▲ # ■	12
11	B2 * ■	B9 ■	D2	B4	B5 *	C2	C10 ▲ #	B3 ■	B2 ■	B2 * ▲ # ■	B3 * ▲ # ■	C9 ▲ # ■	B7	B5	B5 *	D4 ▲ # ■	D4 ▲ # ■	B2 ▲ # ■	11
10	B2 * ■	B9 ■	D2	B4	B5 *	C2	C10 ▲ #	B3 ■	B2 ■	B2 * ▲ # ■	B3 * ▲ # ■	C9 ▲ # ■	B7	B5	B5 *	D4 ▲ # ■	D4 ▲ # ■	B2 ▲ # ■	10
9	B2 * ■	B9 ■	D2	B4	B5 *	C2	C10 ▲ #	B3 ■	B2 ■	B2 * ▲ # ■	B3 * ▲ # ■	C9 ▲ # ■	B7	B5	B5 *	D4 ▲ # ■	D4 ▲ # ■	B2 ▲ # ■	9
8	B2 * ■	B9 ■	D2	B4	B5 *	C2	C10 ▲ #	B3 ■	B2 ■	B2 * ▲ # ■	B3 * ▲ # ■	C9 ▲ # ■	B7	B5	B5 *	D4 ▲ # ■	D4 ▲ # ■	B2 ▲ # ■	8
7	B2 * ■	B9 ■	D2	B4	B5 *	C2	C10 ▲ #	B3 ■	B2 ■	B2 * ▲ # ■	B3 * ▲ # ■	C9 ▲ # ■	B7	B5	B5 *	D4 ▲ # ■	D4 ▲ # ■	B2 ▲ # ■	7
6	B2 * ■	B9 ■	D2	B4	B5 *	C2	C10 ▲ #	B3 ■	B2 ■	B2 * ▲ # ■	B3 * ▲ # ■	C9 ▲ # ■	B7	B5	B5 *	D4 ▲ # ■	D4 ▲ # ■	B2 ▲ # ■	6
5	LANDSCAPE	B9P ■	LANDSCAPE			C10P ▲ #	LANDSCAPE		LANDSCAPE	C9P ▲ # ■	LANDSCAPE		D3 ▲ # ■	D3 ▲ # ■	LANDSCAPE	5			
4	LANDSCAPE / RESIDENTIAL CARPARK		G5	LANDSCAPE / RESIDENTIAL CARPARK						LANDSCAPE / RESIDENTIAL CARPARK				D3P ▲ # ■	D3P ▲ # ■	LANDSCAPE / RESIDENTIAL CARPARK	4		
3	RETAIL											RESIDENTIAL DROP-OFF						3	
2	RETAIL																	2	
1	RETAIL & SERVICED RESIDENCES CARPARK																	1	
B1																		B1	
B1M																		B1M	

Continued from previous page

LEGEND	
*	Mirror Layout
▲	Acoustic Ceiling
#	Balcony Screen
■	Acoustic Façade Treatment with Fins and/or Ledges
All units will be fitted with window restrictor.	


UNIT PLAN LEVEL 4





HORIZON


 4-Bedroom
Type D3P

TREETOPS

 4-Bedroom + Study
Type G1

 4-Bedroom + Study (Duplex)
Type G2

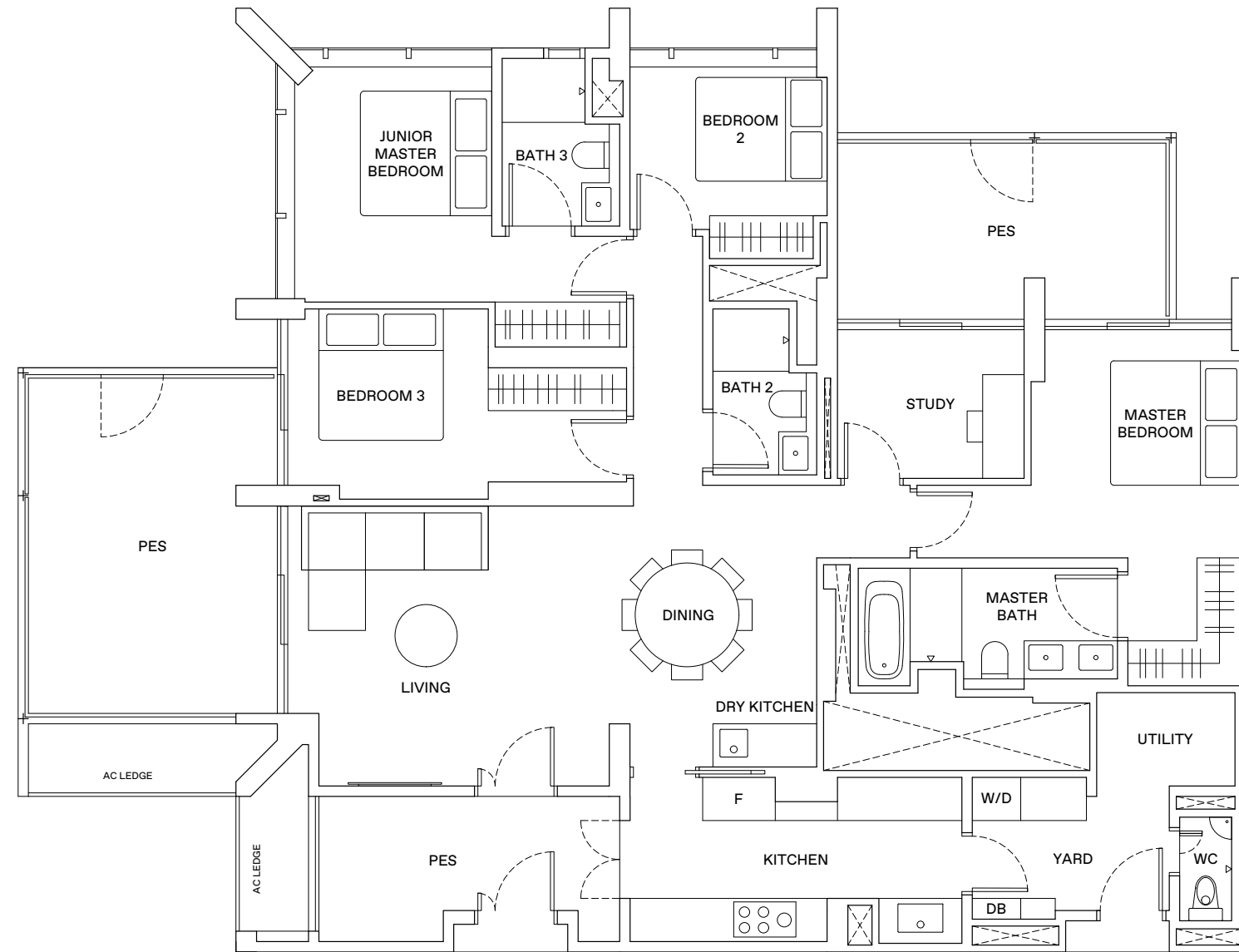
 5-Bedroom
Type G3, G4

 5-Bedroom (Duplex)
Type G5

4 - BEDROOM + STUDY . TYPE G1

185 sqm | 1,991 sqft

9 Jalan Anak Bukit: #04-83

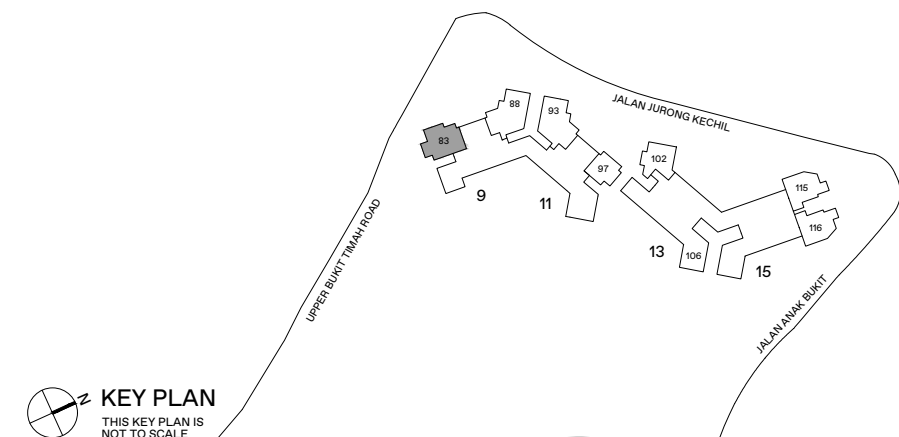


LEGEND

- WD WASHER-DRYER
- W/D WASHER AND DRYER
- F FRIDGE
- DB DISTRIBUTION BOX



AREA INCLUDES AIR-CON (A/C) LEDGE, BALCONY AND STRATA VOID AREA WHERE APPLICABLE. THE PLANS ARE SUBJECT TO CHANGE AS MAY BE APPROVED BY RELEVANT AUTHORITIES. ALL FLOOR PLANS ARE APPROXIMATE MEASUREMENTS ONLY AND ARE SUBJECT TO GOVERNMENT RE-SURVEY. THE BALCONY SHALL NOT BE ENCLOSED UNLESS WITH THE APPROVED BALCONY SCREEN. FOR AN ILLUSTRATION OF THE APPROVED BALCONY SCREEN, PLEASE REFER TO THE DIAGRAM ANNEXED HERETO AS 'ANNEXURE A'.

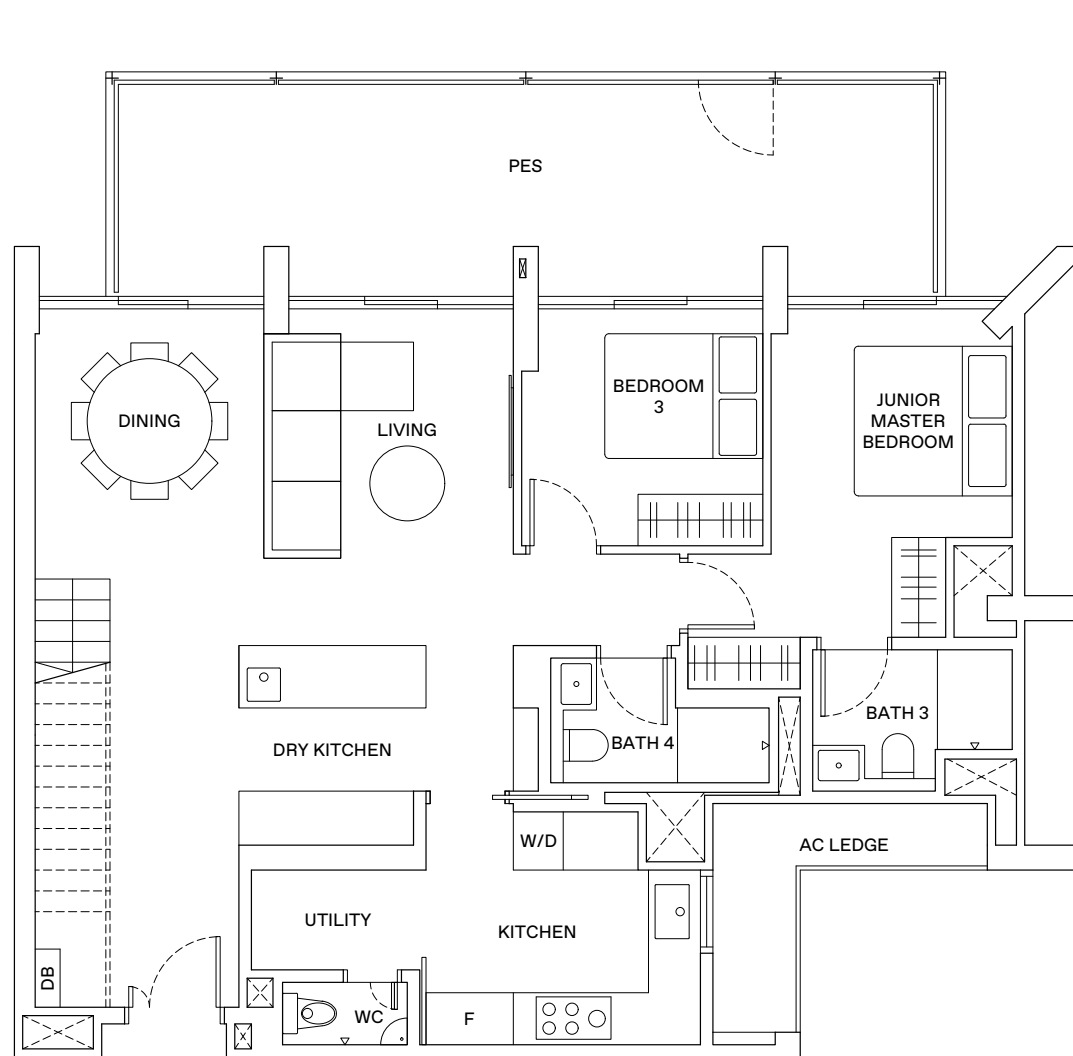


KEY PLAN
THIS KEY PLAN IS NOT TO SCALE

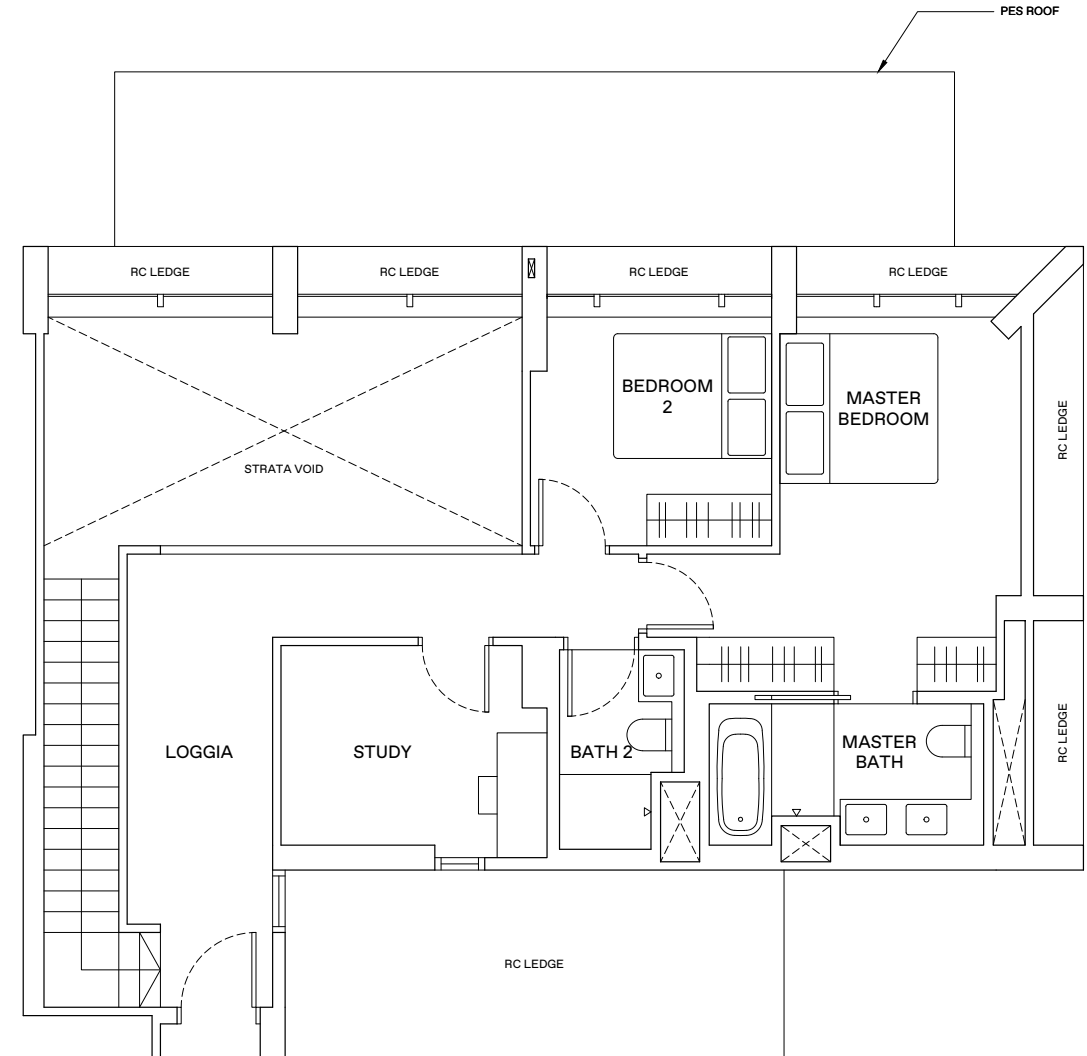
4 - BEDROOM + STUDY. TYPE G2

209 sqm | 2,250 sqft

11 Jalan Anak Bukit: #04-97



LOWER FLOOR



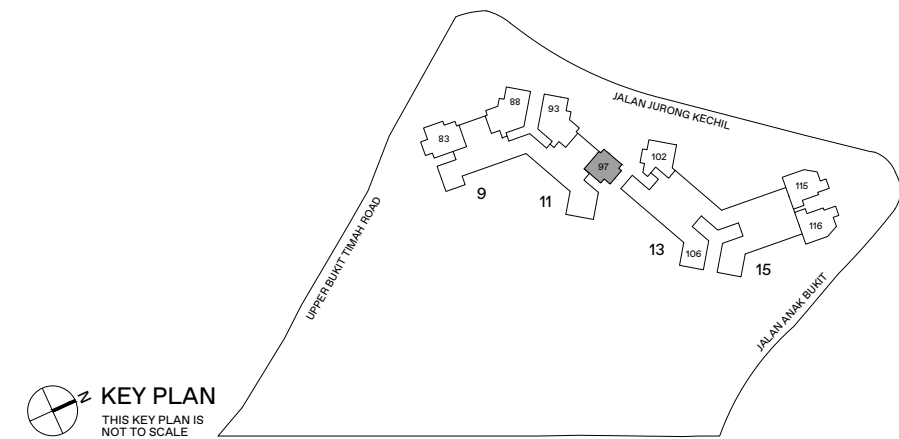
UPPER FLOOR

LEGEND

- WD WASHER-DRYER
- W/D WASHER AND DRYER
- F FRIDGE
- DB DISTRIBUTION BOX



AREA INCLUDES AIR-CON (A/C) LEDGE, BALCONY AND STRATA VOID AREA WHERE APPLICABLE. THE PLANS ARE SUBJECT TO CHANGE AS MAY BE APPROVED BY RELEVANT AUTHORITIES. ALL FLOOR PLANS ARE APPROXIMATE MEASUREMENTS ONLY AND ARE SUBJECT TO GOVERNMENT RE-SURVEY. THE BALCONY SHALL NOT BE ENCLOSED UNLESS WITH THE APPROVED BALCONY SCREEN. FOR AN ILLUSTRATION OF THE APPROVED BALCONY SCREEN, PLEASE REFER TO THE DIAGRAM ANNEXED HERETO AS 'ANNEXURE A'.



KEY PLAN
THIS KEY PLAN IS NOT TO SCALE

5-BEDROOM . TYPE G3
217 sqm | 2,336 sqft

9 Jalan Anak Bukit: #04-88

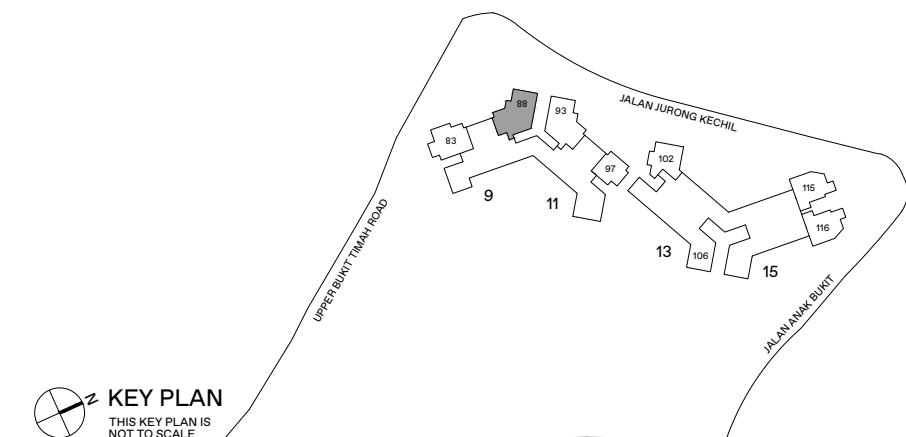


LEGEND

WD	WASHER-DRYER
W/D	WASHER AND DRYER
F	FRIDGE
DB	DISTRIBUTION BOX

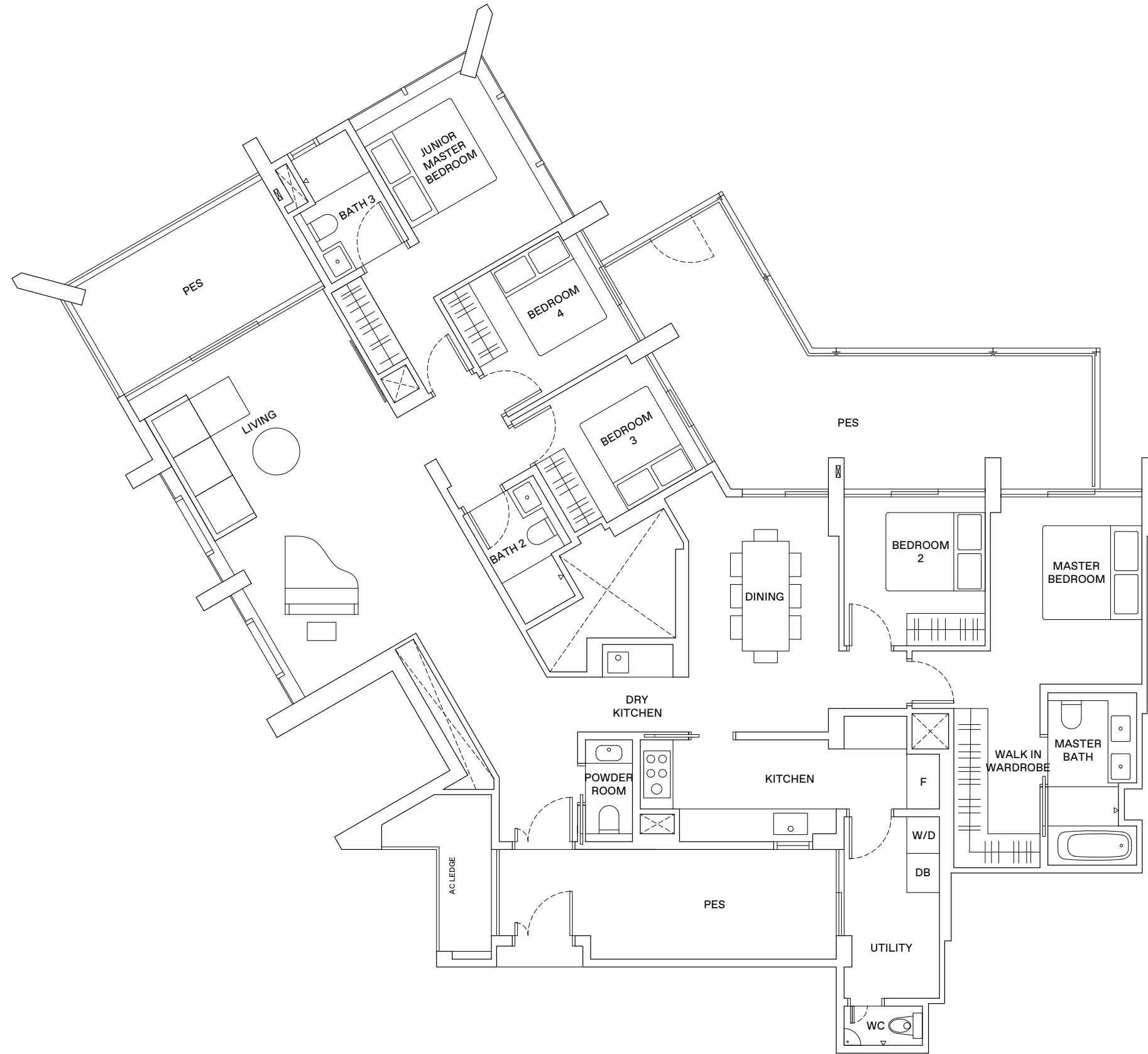


AREA INCLUDES AIR-CON (A/C) LEDGE, BALCONY AND STRATA VOID AREA WHERE APPLICABLE. THE PLANS ARE SUBJECT TO CHANGE AS MAY BE APPROVED BY RELEVANT AUTHORITIES. ALL FLOOR PLANS ARE APPROXIMATE MEASUREMENTS ONLY AND ARE SUBJECT TO GOVERNMENT RE-SURVEY. THE BALCONY SHALL NOT BE ENCLOSED UNLESS WITH THE APPROVED BALCONY SCREEN. FOR AN ILLUSTRATION OF THE APPROVED BALCONY SCREEN, PLEASE REFER TO THE DIAGRAM ANNEXED HERETO AS 'ANNEXURE A'.



5-BEDROOM . TYPE G4
218 sqm | 2,347 sqft

11 Jalan Anak Bukit: #04-93

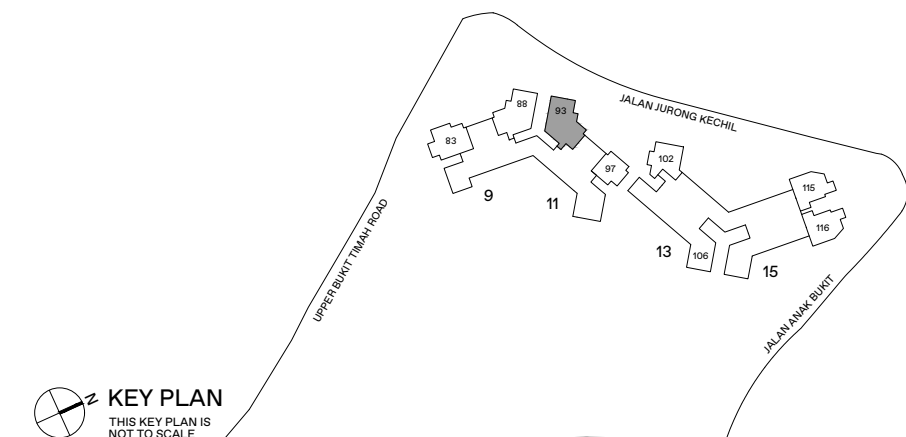


LEGEND

- WD WASHER-DRYER
- W/D WASHER AND DRYER
- F FRIDGE
- DB DISTRIBUTION BOX



AREA INCLUDES AIR-CON (A/C) LEDGE, BALCONY AND STRATA VOID AREA WHERE APPLICABLE. THE PLANS ARE SUBJECT TO CHANGE AS MAY BE APPROVED BY RELEVANT AUTHORITIES. ALL FLOOR PLANS ARE APPROXIMATE MEASUREMENTS ONLY AND ARE SUBJECT TO GOVERNMENT RE-SURVEY. THE BALCONY SHALL NOT BE ENCLOSED UNLESS WITH THE APPROVED BALCONY SCREEN. FOR AN ILLUSTRATION OF THE APPROVED BALCONY SCREEN, PLEASE REFER TO THE DIAGRAM ANNEXED HERETO AS 'ANNEXURE A'.

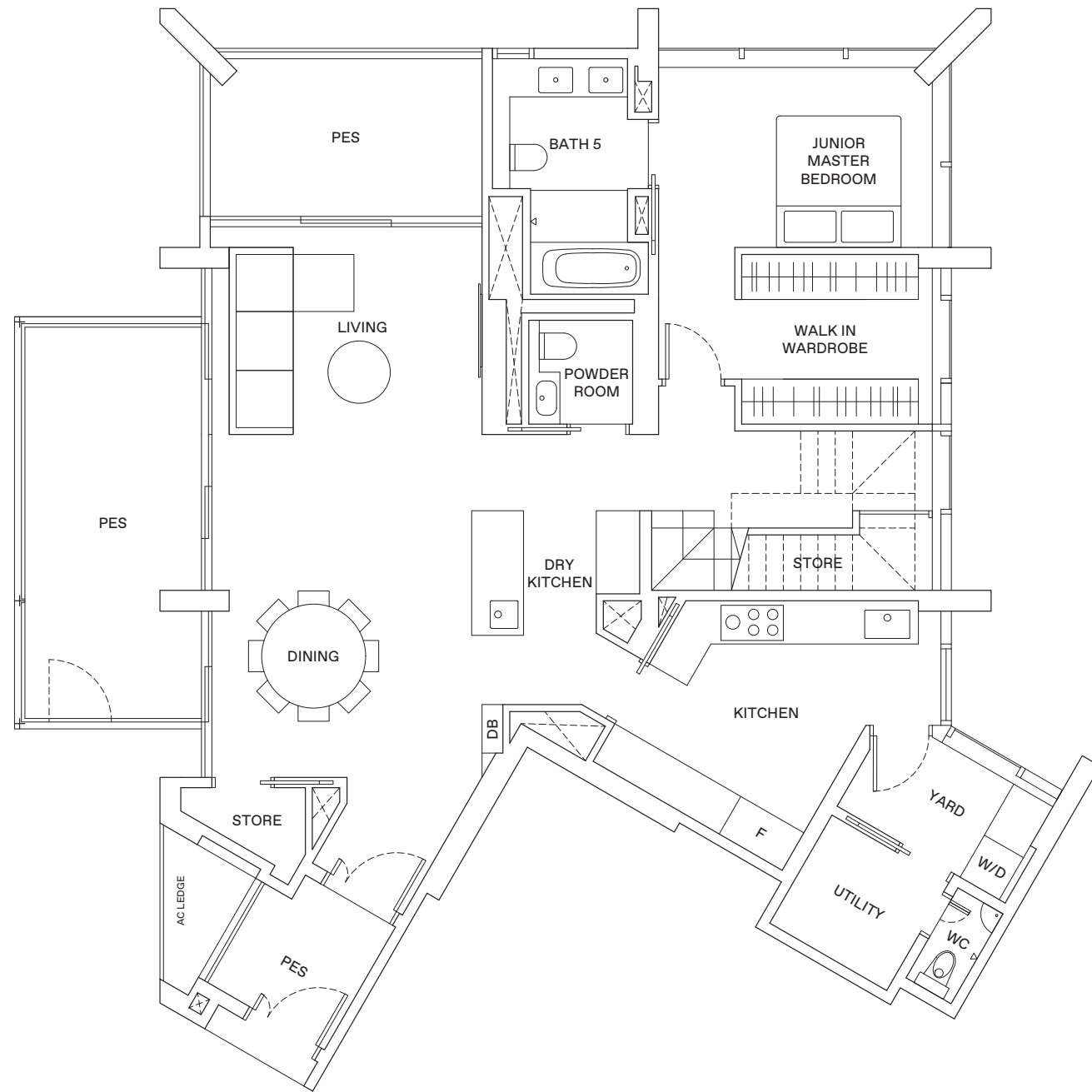


KEY PLAN
THIS KEY PLAN IS NOT TO SCALE

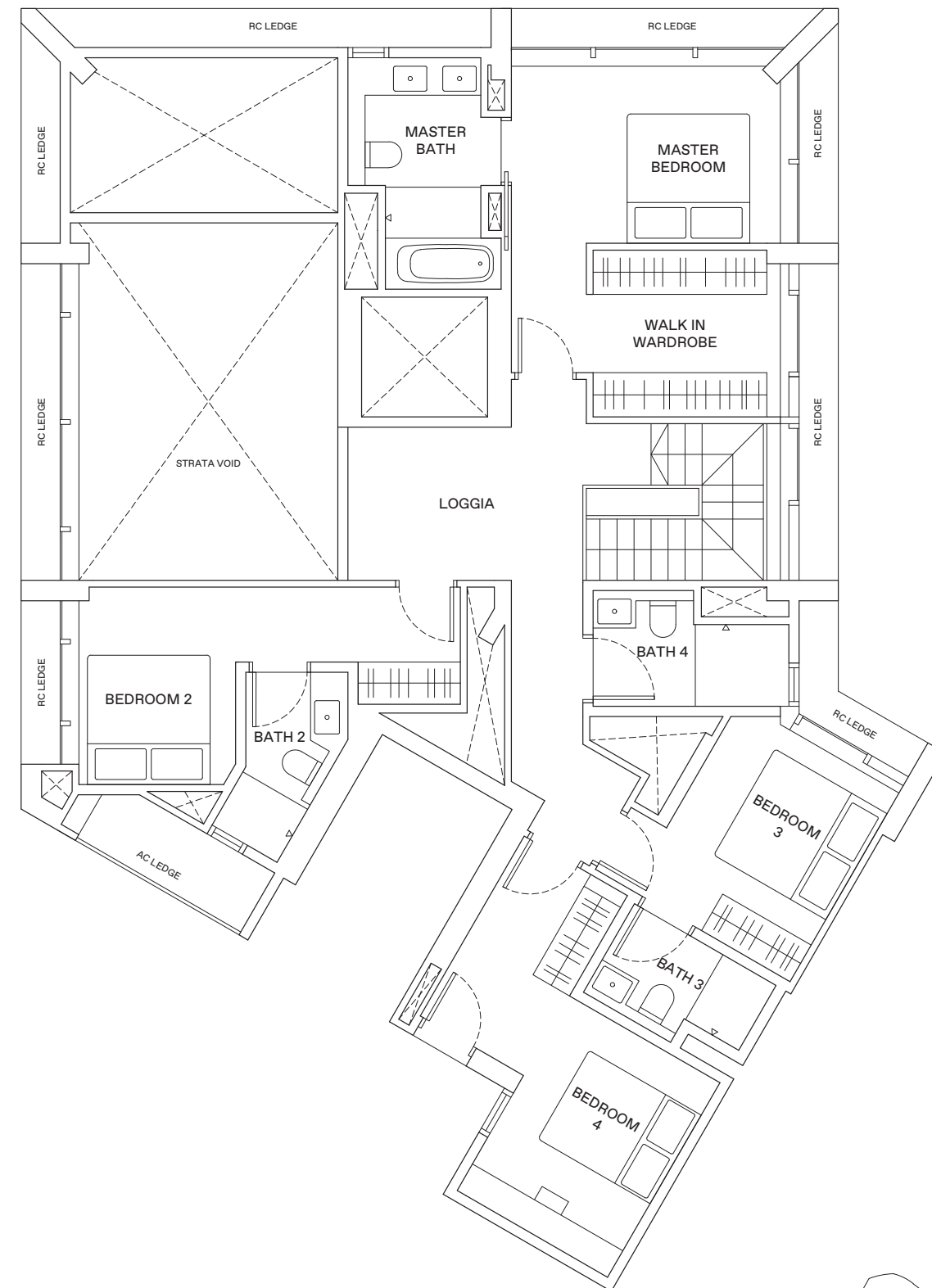
5-BEDROOM . TYPE G5

279 sqm | 3,003 sqft

13 Jalan Anak Bukit: #04-102



LOWER FLOOR



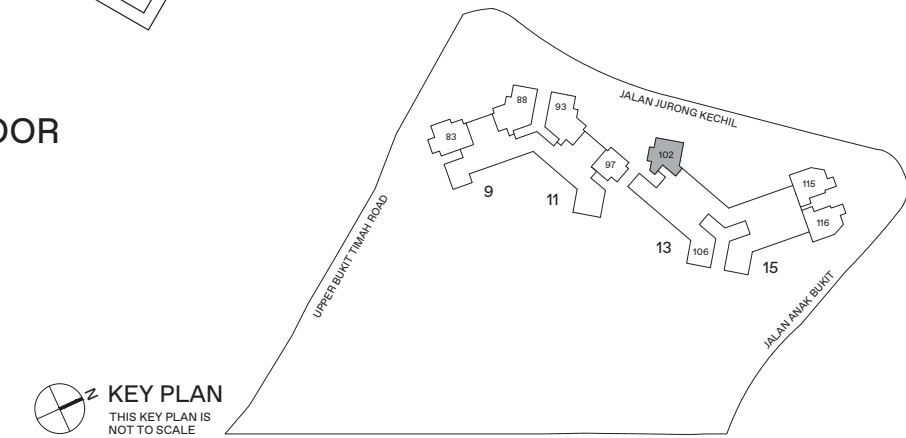
UPPER FLOOR

LEGEND

- WD WASHER-DRYER
- W/D WASHER AND DRYER
- F FRIDGE
- DB DISTRIBUTION BOX



AREA INCLUDES AIR-CON (A/C) LEDGE, BALCONY AND STRATA VOID AREA WHERE APPLICABLE. THE PLANS ARE SUBJECT TO CHANGE AS MAY BE APPROVED BY RELEVANT AUTHORITIES. ALL FLOOR PLANS ARE APPROXIMATE MEASUREMENTS ONLY AND ARE SUBJECT TO GOVERNMENT RE-SURVEY. THE BALCONY SHALL NOT BE ENCLOSED UNLESS WITH THE APPROVED BALCONY SCREEN. FOR AN ILLUSTRATION OF THE APPROVED BALCONY SCREEN, PLEASE REFER TO THE DIAGRAM ANNEXED HERETO AS "ANNEXURE A".



KEY PLAN
THIS KEY PLAN IS NOT TO SCALE



UNIT PLAN LEVEL 12-17



Others

- A** Residential Entrance (Level 3)
- B** Water Tanks (Level 12, 17, 31, 32)
- C** Generator Set (Level 6)
- D** Substation (Level 1)
- E** Bin Centre (Level 1)
- F** Cooling Towers (Level 4)

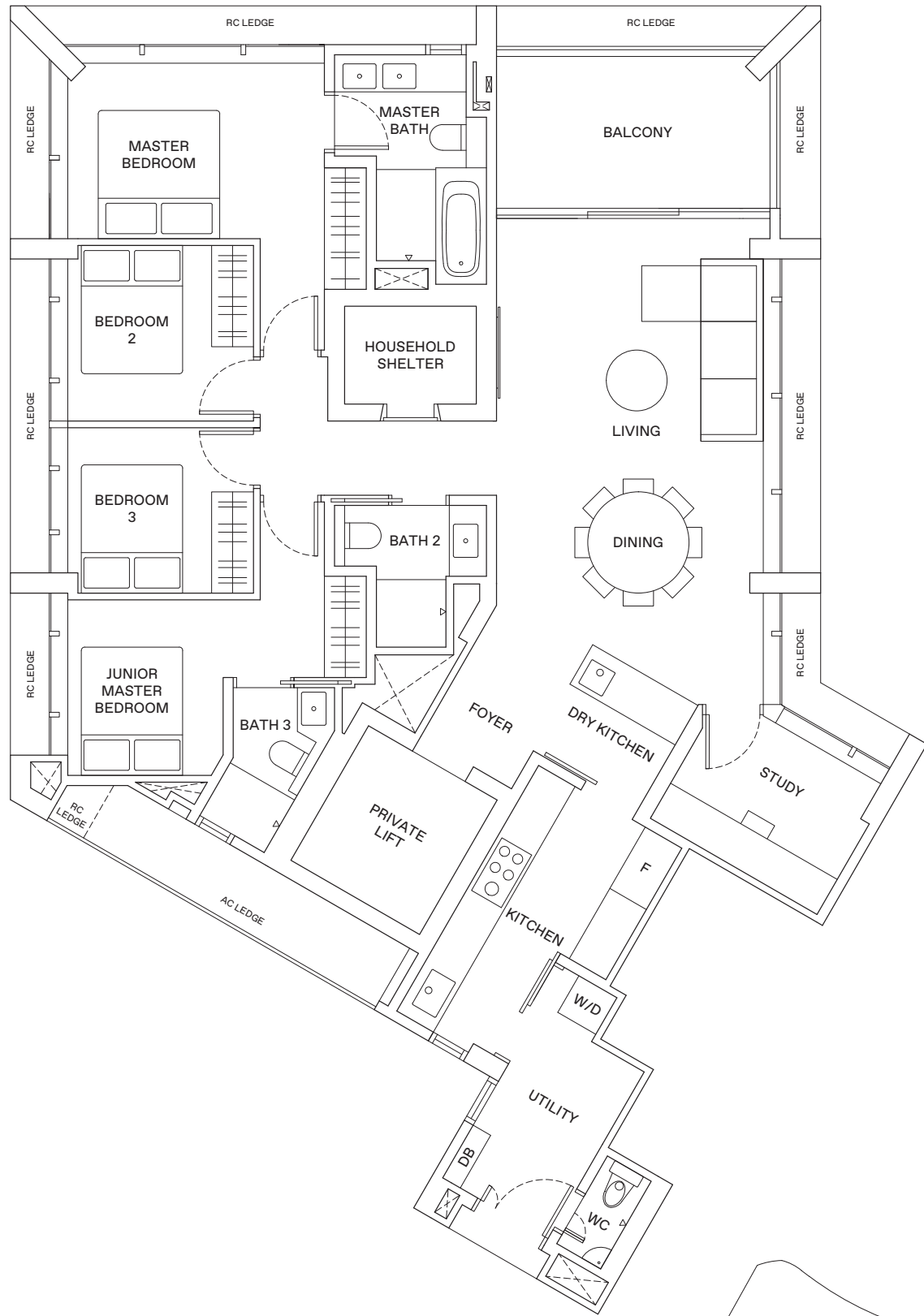
TREETOPS

-  4-Bedroom + Study (Sky Terrace)
Type D5
-  5-Bedroom (Sky Terrace)
Type E1-E3

4 - BEDROOM + STUDY . TYPE D5

145 sqm | 1,561 sqft

13 Jalan Anak Bukit: #17-102



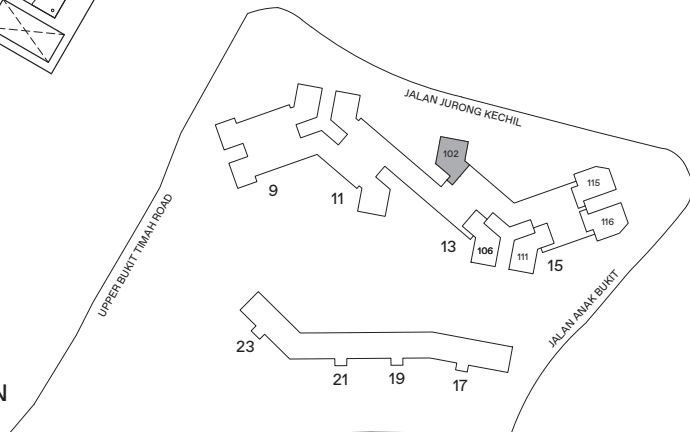
LEGEND

- WD WASHER-DRYER
- W/D WASHER AND DRYER
- F FRIDGE
- DB DISTRIBUTION BOX



AREA INCLUDES AIR-CON (A/C) LEDGE, BALCONY AND STRATA VOID AREA WHERE APPLICABLE. THE PLANS ARE SUBJECT TO CHANGE AS MAY BE APPROVED BY RELEVANT AUTHORITIES. ALL FLOOR PLANS ARE APPROXIMATE MEASUREMENTS ONLY AND ARE SUBJECT TO GOVERNMENT RE-SURVEY. THE BALCONY SHALL NOT BE ENCLOSED UNLESS WITH THE APPROVED BALCONY SCREEN. FOR AN ILLUSTRATION OF THE APPROVED BALCONY SCREEN, PLEASE REFER TO THE DIAGRAM ANNEXED HERETO AS 'ANNEXURE A'.

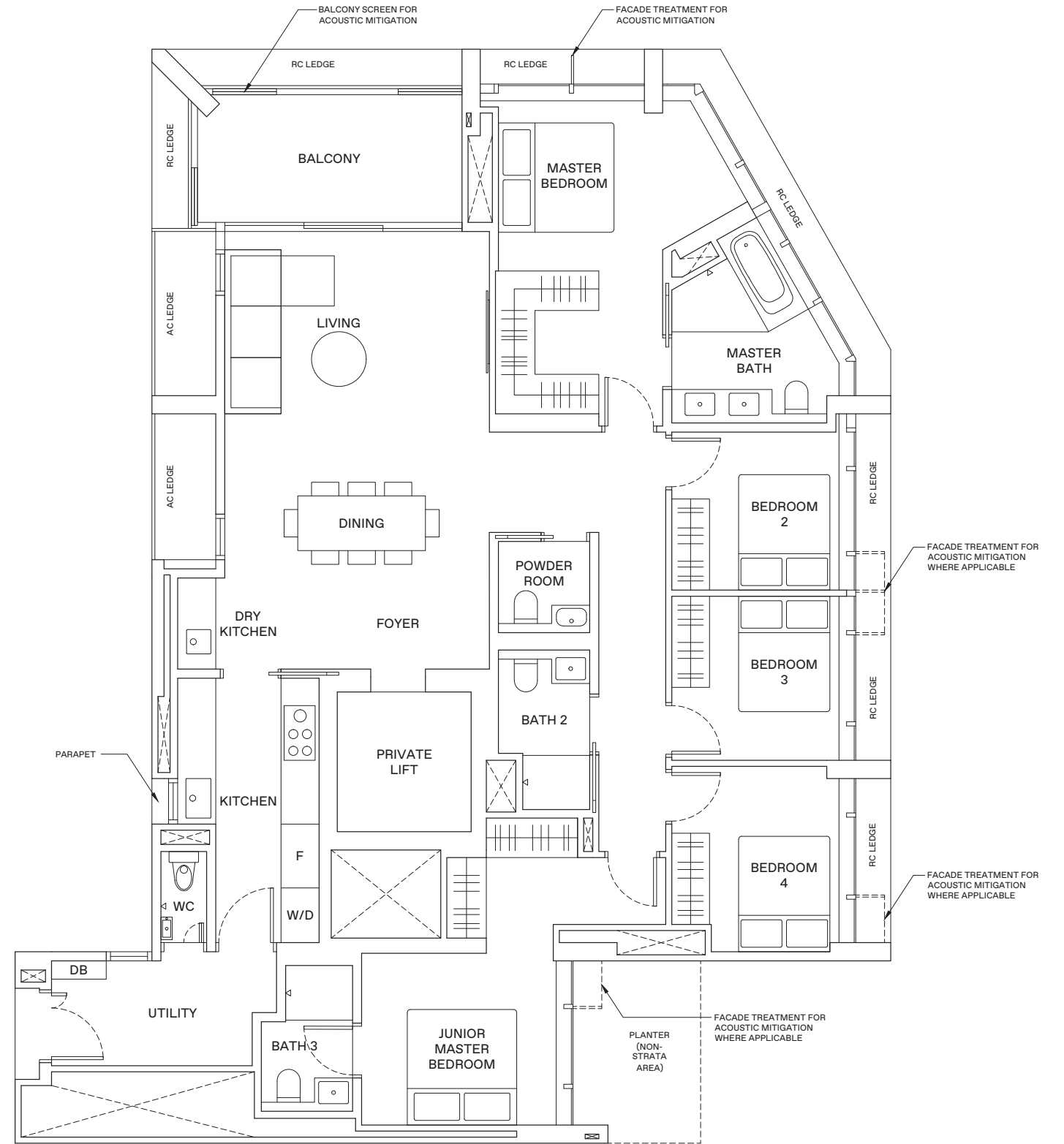
KEY PLAN
THIS KEY PLAN IS NOT TO SCALE



5 - BEDROOM . TYPE E1

164 sqm | 1,765 sqft

15 Jalan Anak Bukit: #17-115 (Mirrored)
#17-116



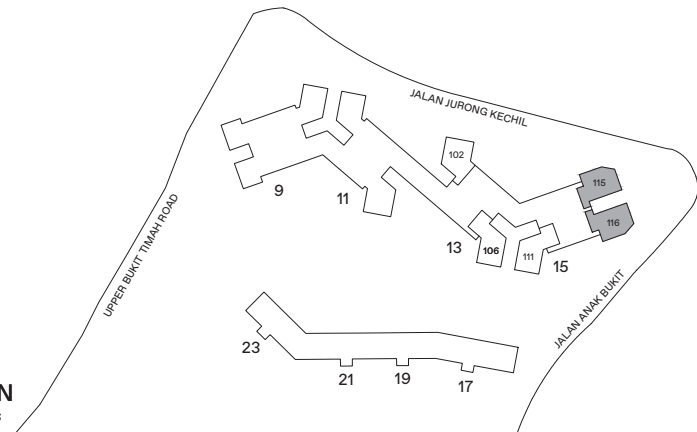
LEGEND

- WD WASHER-DRYER
- W/D WASHER AND DRYER
- F FRIDGE
- DB DISTRIBUTION BOX



AREA INCLUDES AIR-CON (A/C) LEDGE, BALCONY AND STRATA VOID AREA WHERE APPLICABLE. THE PLANS ARE SUBJECT TO CHANGE AS MAY BE APPROVED BY RELEVANT AUTHORITIES. ALL FLOOR PLANS ARE APPROXIMATE MEASUREMENTS ONLY AND ARE SUBJECT TO GOVERNMENT RE-SURVEY. THE BALCONY SHALL NOT BE ENCLOSED UNLESS WITH THE APPROVED BALCONY SCREEN. FOR AN ILLUSTRATION OF THE APPROVED BALCONY SCREEN, PLEASE REFER TO THE DIAGRAM ANNEXED HERETO AS 'ANNEXURE A'.

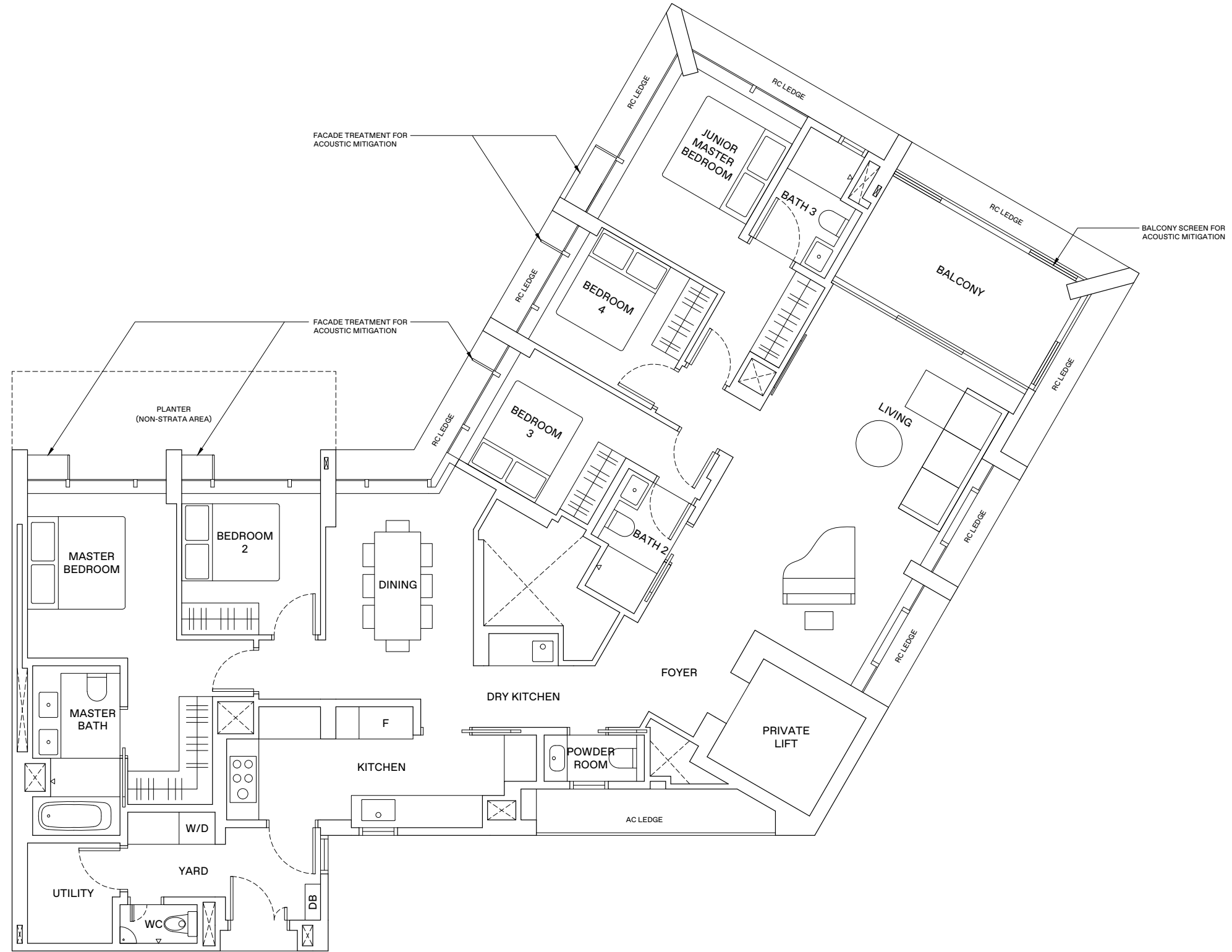
KEY PLAN
THIS KEY PLAN IS NOT TO SCALE



5-BEDROOM . TYPE E2

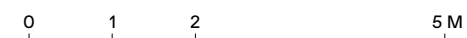
178 sqm | 1,916 sqft

15 Jalan Anak Bukit: #17-111

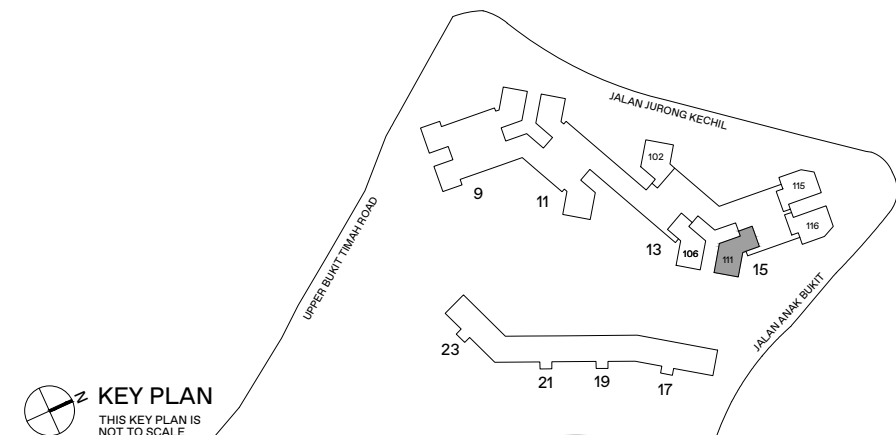


LEGEND

WD	WASHER-DRYER
W/D	WASHER AND DRYER
F	FRIDGE
DB	DISTRIBUTION BOX



AREA INCLUDES AIR-CON (A/C) LEDGE, BALCONY AND STRATA VOID AREA WHERE APPLICABLE. THE PLANS ARE SUBJECT TO CHANGE AS MAY BE APPROVED BY RELEVANT AUTHORITIES. ALL FLOOR PLANS ARE APPROXIMATE MEASUREMENTS ONLY AND ARE SUBJECT TO GOVERNMENT RE-SURVEY. THE BALCONY SHALL NOT BE ENCLOSED UNLESS WITH THE APPROVED BALCONY SCREEN. FOR AN ILLUSTRATION OF THE APPROVED BALCONY SCREEN, PLEASE REFER TO THE DIAGRAM ANNEXED HERETO AS 'ANNEXURE A'.

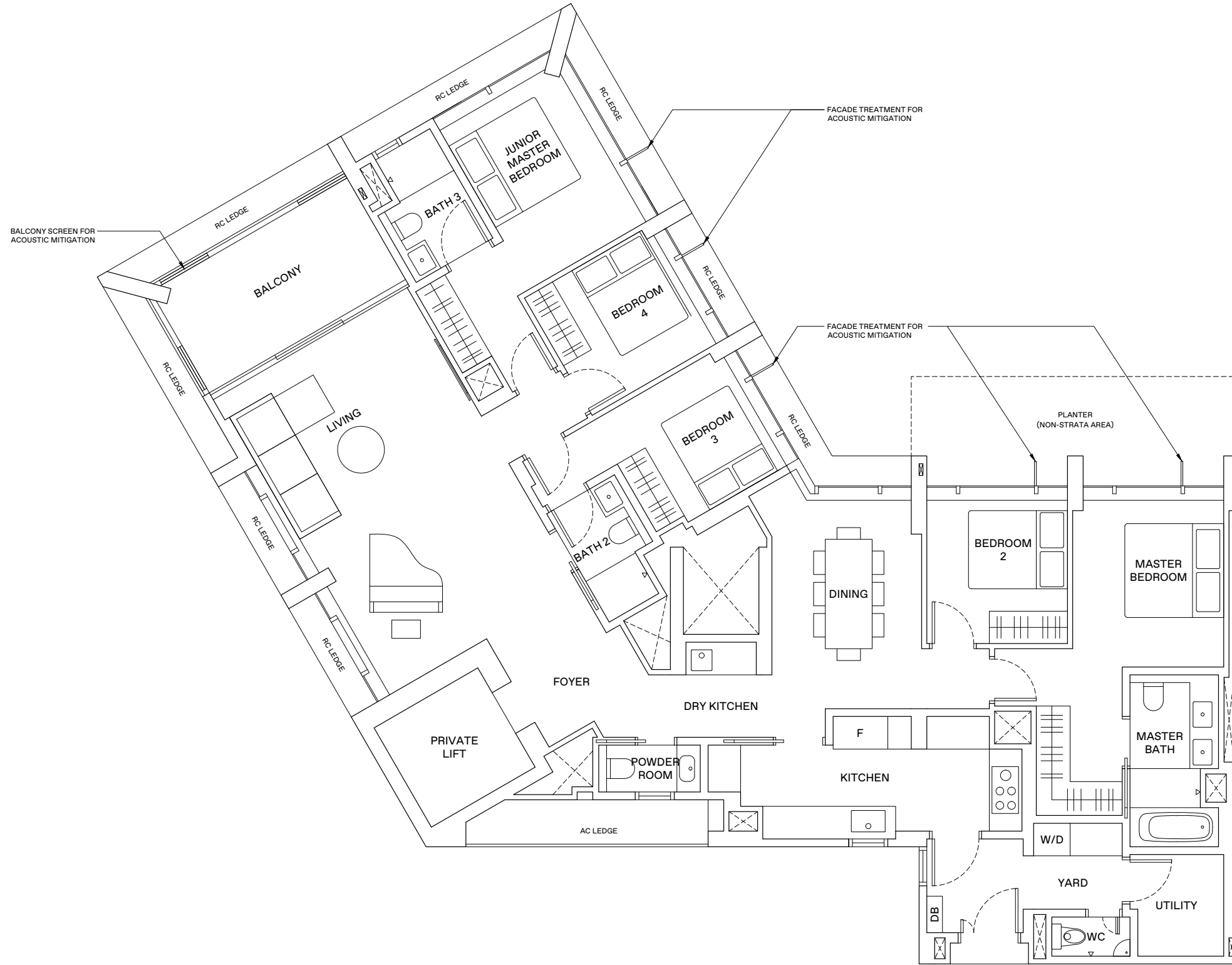


KEY PLAN
THIS KEY PLAN IS NOT TO SCALE

5-BEDROOM . TYPE E3

178 sqm | 1,916 sqft

13 Jalan Anak Bukit: #17-106

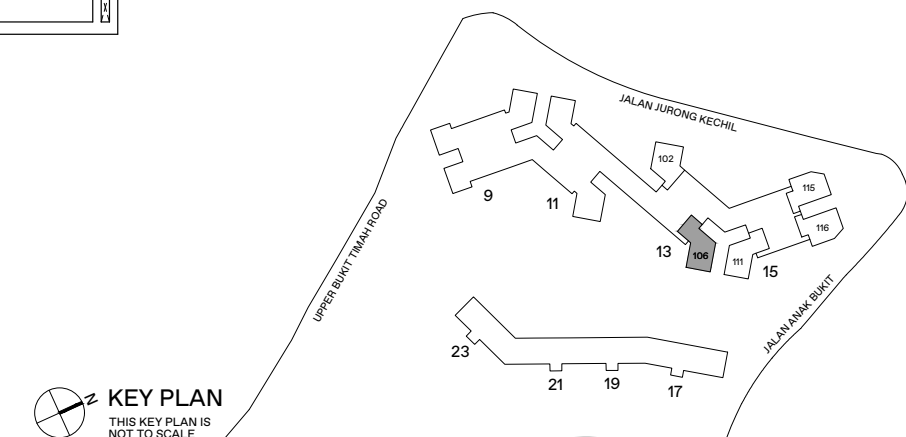


LEGEND

- WD WASHER-DRYER
- W/D WASHER AND DRYER
- F FRIDGE
- DB DISTRIBUTION BOX

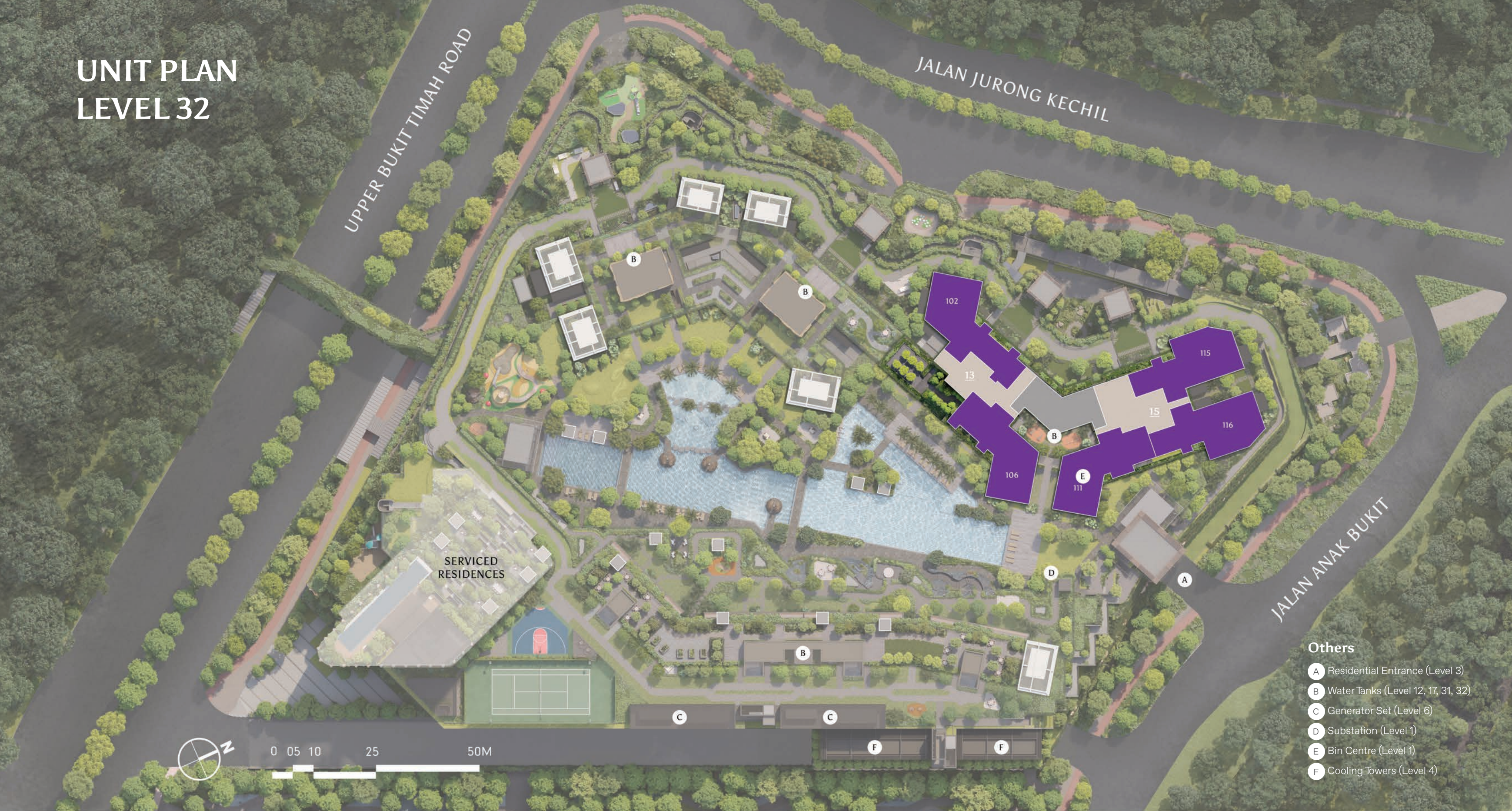


AREA INCLUDES AIR-CON (A/C) LEDGE, BALCONY AND STRATA VOID AREA WHERE APPLICABLE. THE PLANS ARE SUBJECT TO CHANGE AS MAY BE APPROVED BY RELEVANT AUTHORITIES. ALL FLOOR PLANS ARE APPROXIMATE MEASUREMENTS ONLY AND ARE SUBJECT TO GOVERNMENT RE-SURVEY. THE BALCONY SHALL NOT BE ENCLOSED UNLESS WITH THE APPROVED BALCONY SCREEN. FOR AN ILLUSTRATION OF THE APPROVED BALCONY SCREEN, PLEASE REFER TO THE DIAGRAM ANNEXED HERETO AS 'ANNEXURE A'.




KEY PLAN
THIS KEY PLAN IS NOT TO SCALE

UNIT PLAN LEVEL 32



- Others**
- A Residential Entrance (Level 3)
 - B Water Tanks (Level 12, 17, 31, 32)
 - C Generator Set (Level 6)
 - D Substation (Level 1)
 - E Bin Centre (Level 1)
 - F Cooling Towers (Level 4)

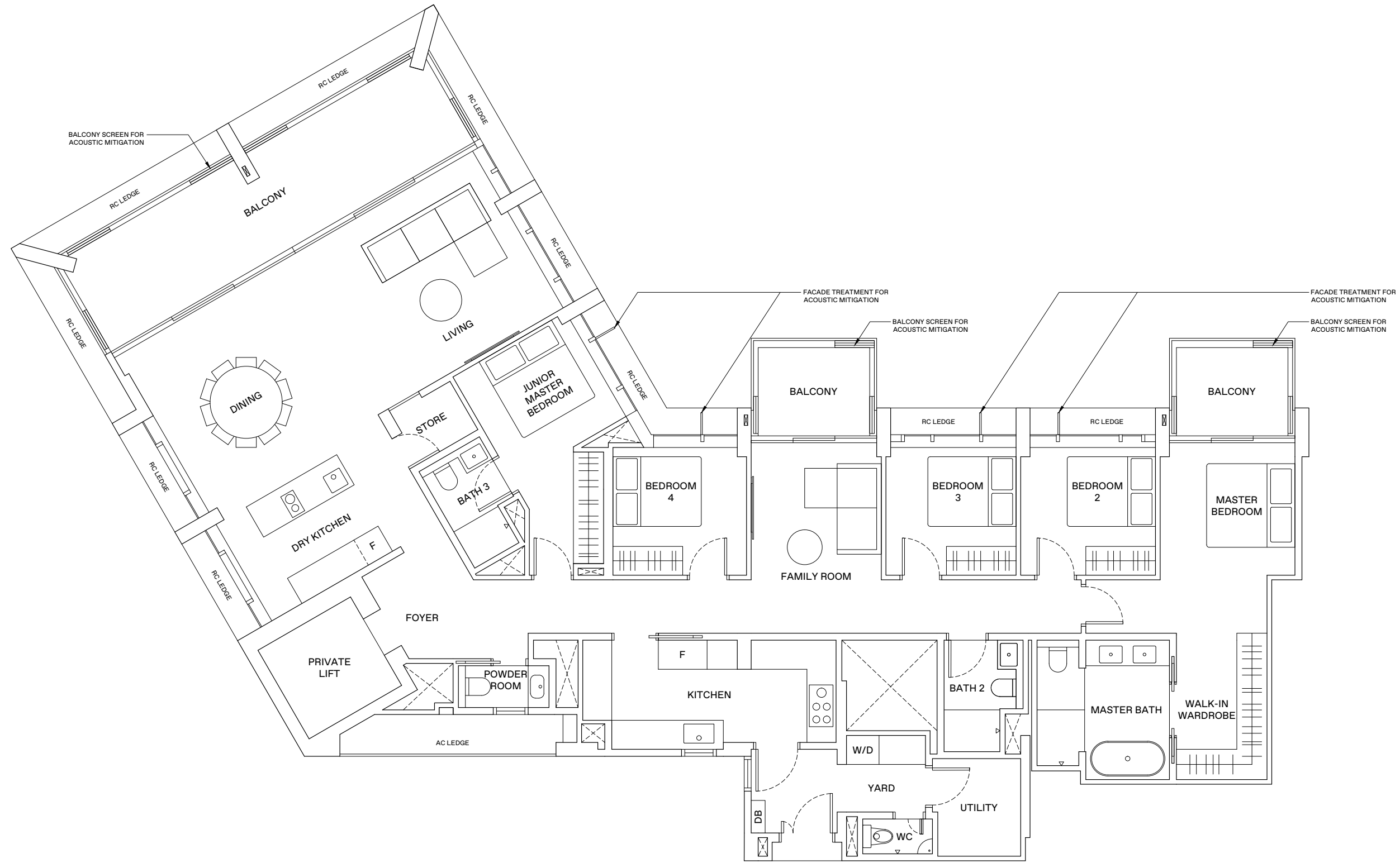
TREETOPS

-  5-Bedroom (Penthouse)
Type P1-P4

5-BEDROOM . TYPE P1

231 sqm | 2,486 sqft

13 Jalan Anak Bukit: #32-106

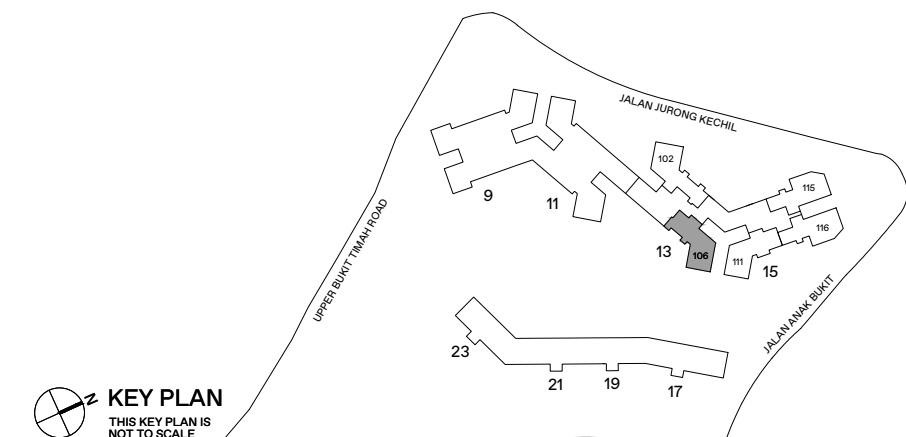


LEGEND

- WD WASHER-DRYER
- W/D WASHER AND DRYER
- F FRIDGE
- DB DISTRIBUTION BOX



AREA INCLUDES AIR-CON (A/C) LEDGE, BALCONY AND STRATA VOID AREA WHERE APPLICABLE. THE PLANS ARE SUBJECT TO CHANGE AS MAY BE APPROVED BY RELEVANT AUTHORITIES. ALL FLOOR PLANS ARE APPROXIMATE MEASUREMENTS ONLY AND ARE SUBJECT TO GOVERNMENT RE-SURVEY. THE BALCONY SHALL NOT BE ENCLOSED UNLESS WITH THE APPROVED BALCONY SCREEN. FOR AN ILLUSTRATION OF THE APPROVED BALCONY SCREEN, PLEASE REFER TO THE DIAGRAM ANNEXED HERETO AS 'ANNEXURE A'.

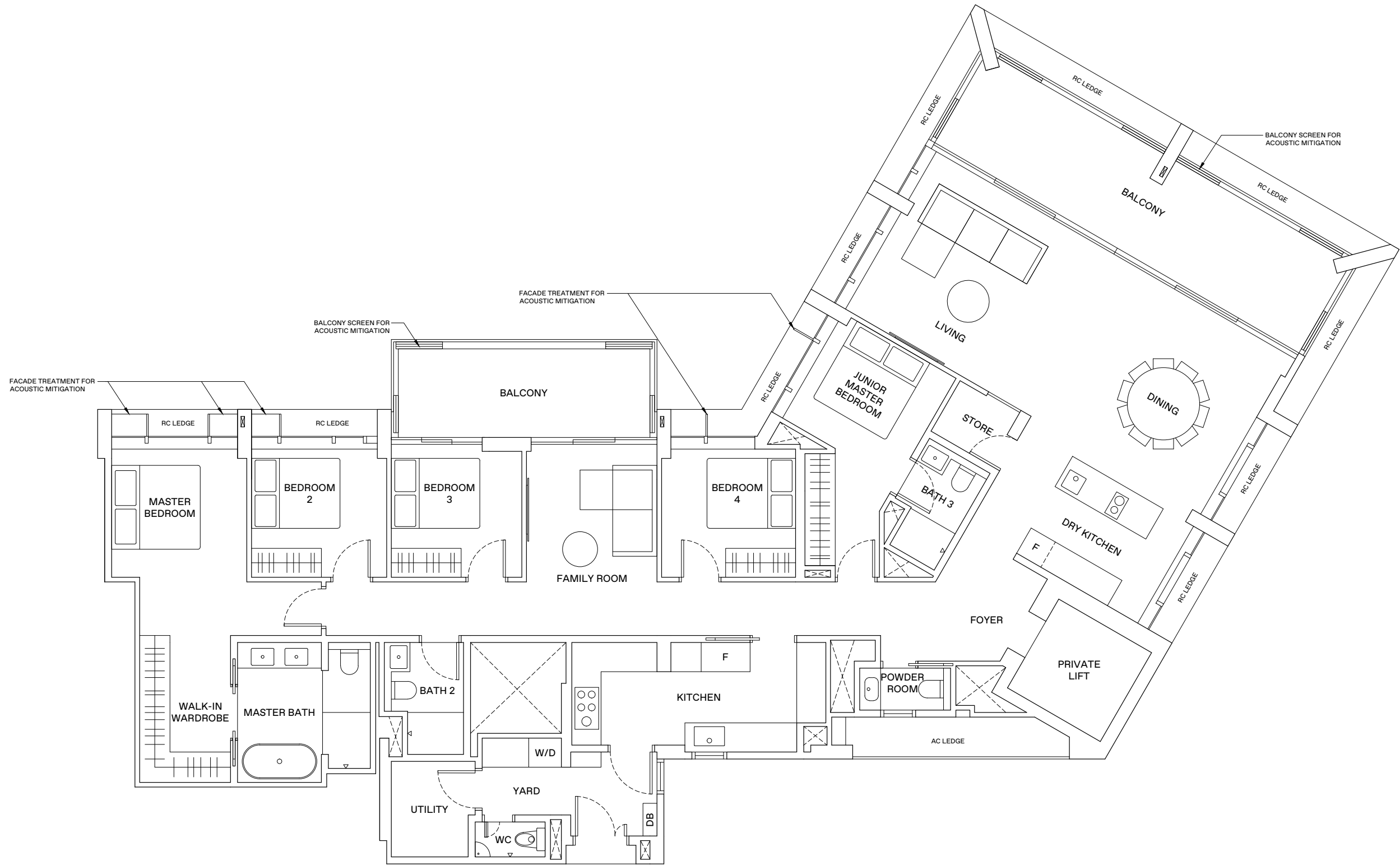


KEY PLAN
THIS KEY PLAN IS NOT TO SCALE

5-BEDROOM . TYPE P2

231 sqm | 2,486 sqft

15 Jalan Anak Bukit: #32-111

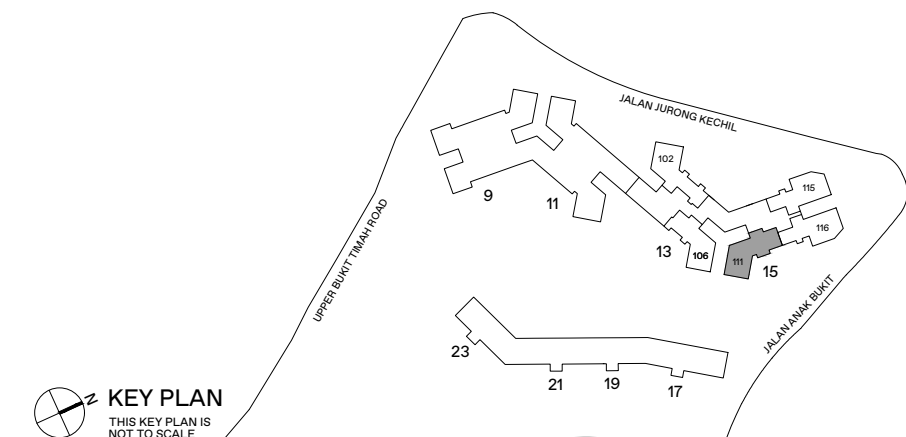


LEGEND

WD	WASHER-DRYER
W/D	WASHER AND DRYER
F	FRIDGE
DB	DISTRIBUTION BOX



AREA INCLUDES AIR-CON (A/C) LEDGE, BALCONY AND STRATA VOID AREA WHERE APPLICABLE. THE PLANS ARE SUBJECT TO CHANGE AS MAY BE APPROVED BY RELEVANT AUTHORITIES. ALL FLOOR PLANS ARE APPROXIMATE MEASUREMENTS ONLY AND ARE SUBJECT TO GOVERNMENT RE-SURVEY. THE BALCONY SHALL NOT BE ENCLOSED UNLESS WITH THE APPROVED BALCONY SCREEN. FOR AN ILLUSTRATION OF THE APPROVED BALCONY SCREEN, PLEASE REFER TO THE DIAGRAM ANNEXED HERETO AS 'ANNEXURE A'.

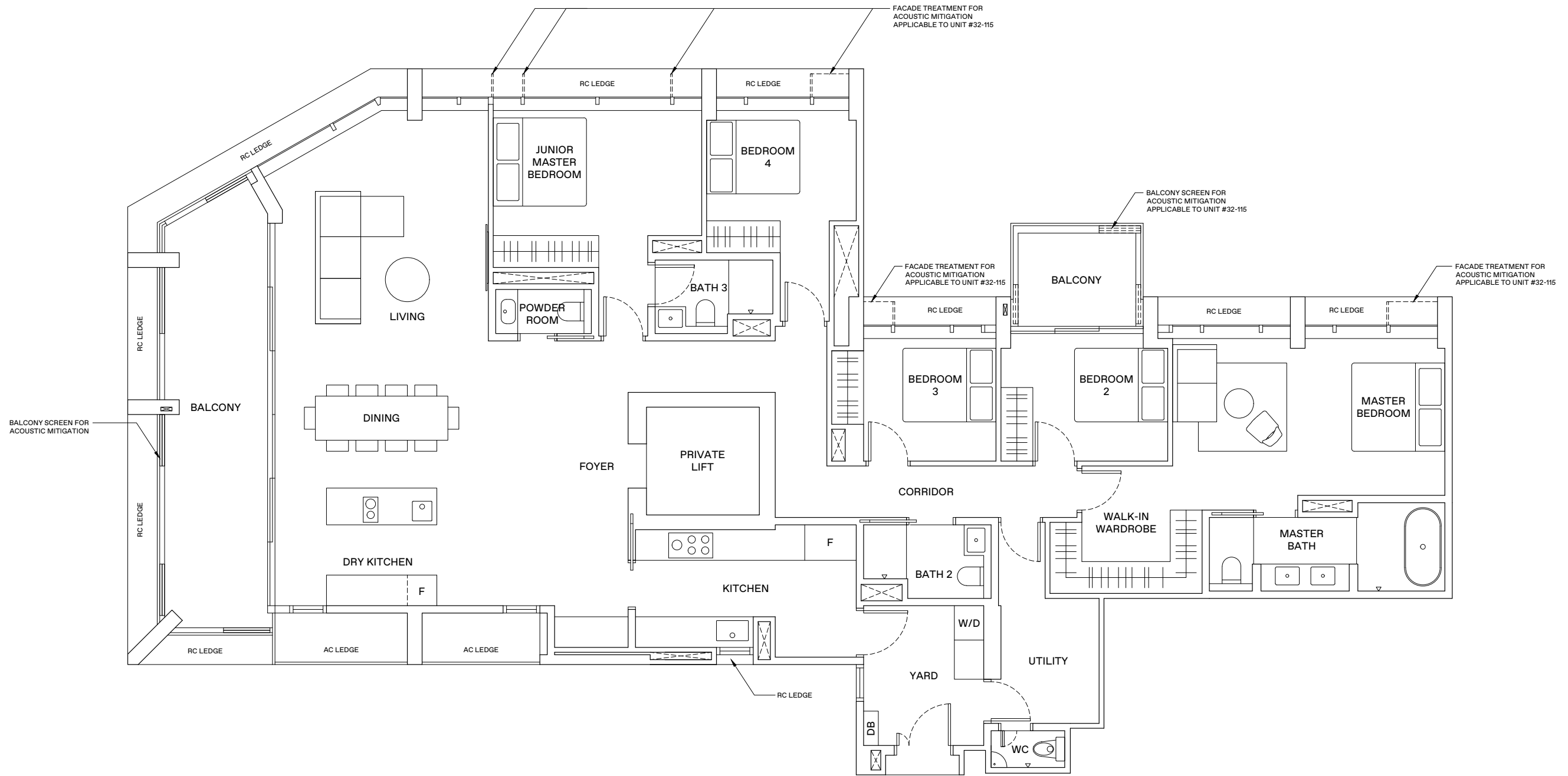


KEY PLAN
THIS KEY PLAN IS NOT TO SCALE

5-BEDROOM . TYPE P3

234 sqm | 2,519 sqft

15 Jalan Anak Bukit: #32-115 (Mirrored)
#32-116

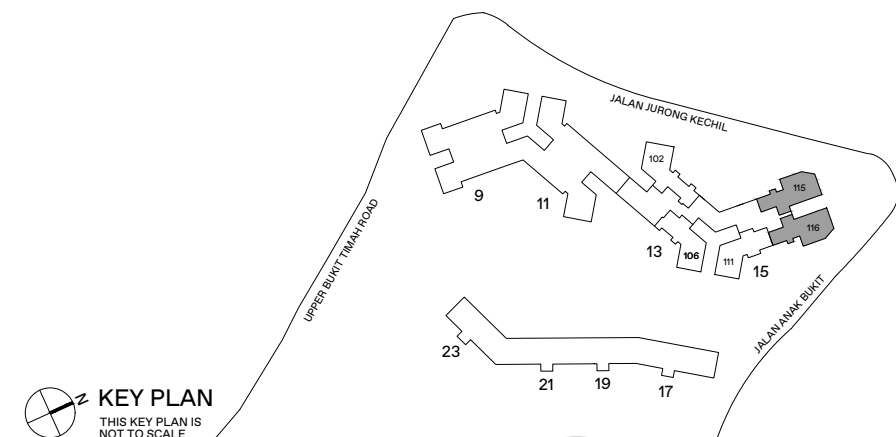


LEGEND

- WD WASHER-DRYER
- W/D WASHER AND DRYER
- F FRIDGE
- DB DISTRIBUTION BOX



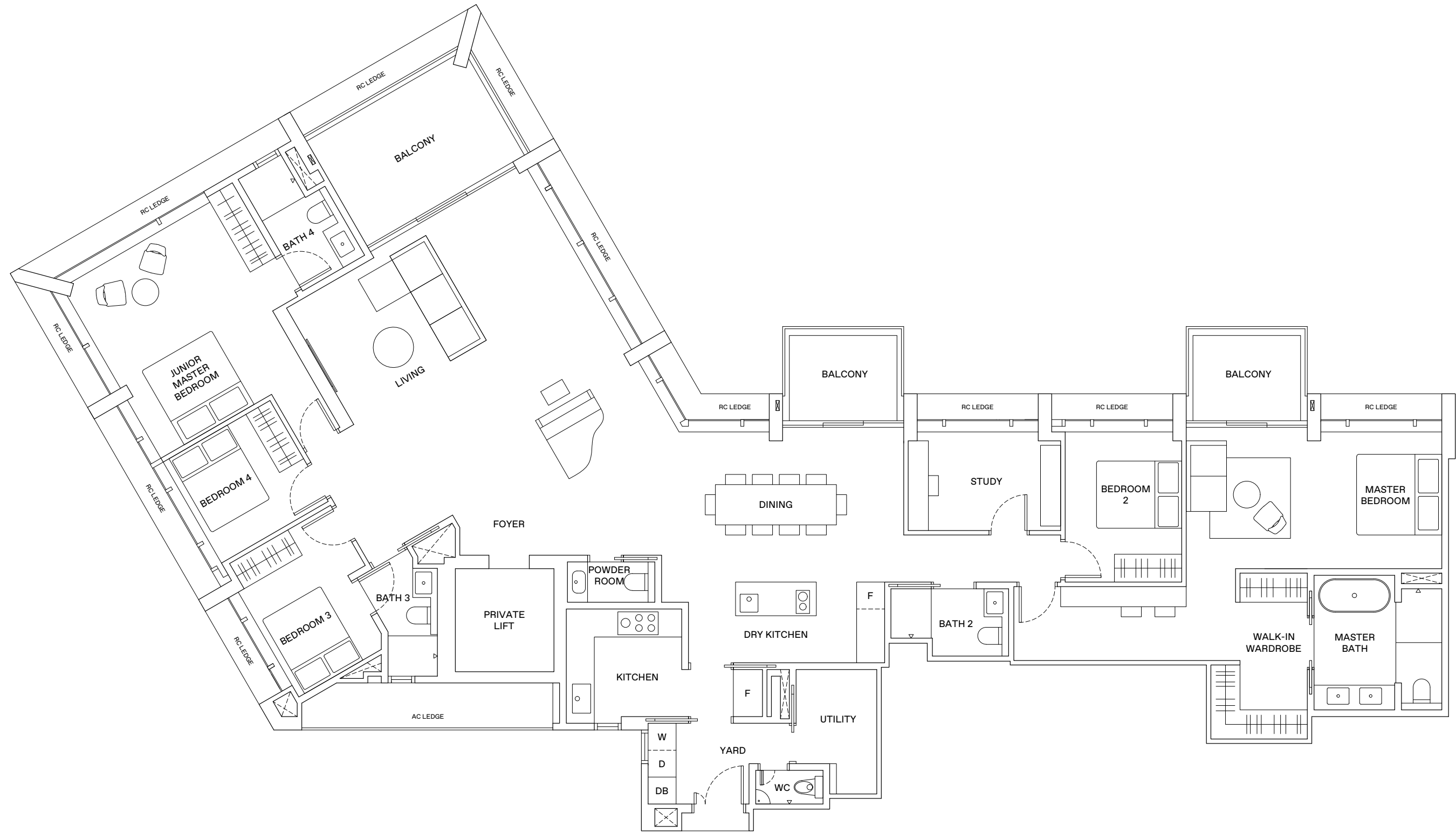
AREA INCLUDES AIR-CON (A/C) LEDGE, BALCONY AND STRATA VOID AREA WHERE APPLICABLE. THE PLANS ARE SUBJECT TO CHANGE AS MAY BE APPROVED BY RELEVANT AUTHORITIES. ALL FLOOR PLANS ARE APPROXIMATE MEASUREMENTS ONLY AND ARE SUBJECT TO GOVERNMENT RE-SURVEY. THE BALCONY SHALL NOT BE ENCLOSED UNLESS WITH THE APPROVED BALCONY SCREEN. FOR AN ILLUSTRATION OF THE APPROVED BALCONY SCREEN, PLEASE REFER TO THE DIAGRAM ANNEXED HERETO AS 'ANNEXURE A'.



5-BEDROOM + STUDY . TYPE P4

261 sqm | 2,809 sqft

13 Jalan Anak Bukit: #32-102

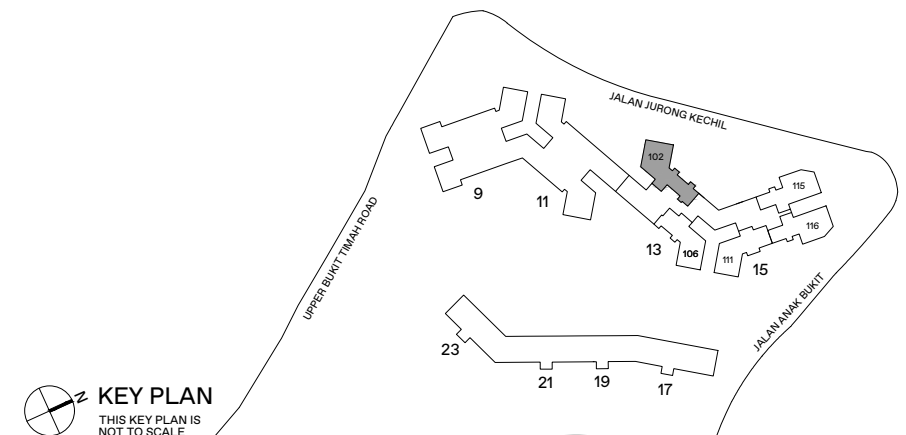


LEGEND

- WD WASHER-DRYER
- W/D WASHER AND DRYER
- F FRIDGE
- DB DISTRIBUTION BOX



AREA INCLUDES AIR-CON (A/C) LEDGE, BALCONY AND STRATA VOID AREA WHERE APPLICABLE. THE PLANS ARE SUBJECT TO CHANGE AS MAY BE APPROVED BY RELEVANT AUTHORITIES. ALL FLOOR PLANS ARE APPROXIMATE MEASUREMENTS ONLY AND ARE SUBJECT TO GOVERNMENT RE-SURVEY. THE BALCONY SHALL NOT BE ENCLOSED UNLESS WITH THE APPROVED BALCONY SCREEN. FOR AN ILLUSTRATION OF THE APPROVED BALCONY SCREEN, PLEASE REFER TO THE DIAGRAM ANNEXED HERETO AS 'ANNEXURE A'.



KEY PLAN
THIS KEY PLAN IS NOT TO SCALE

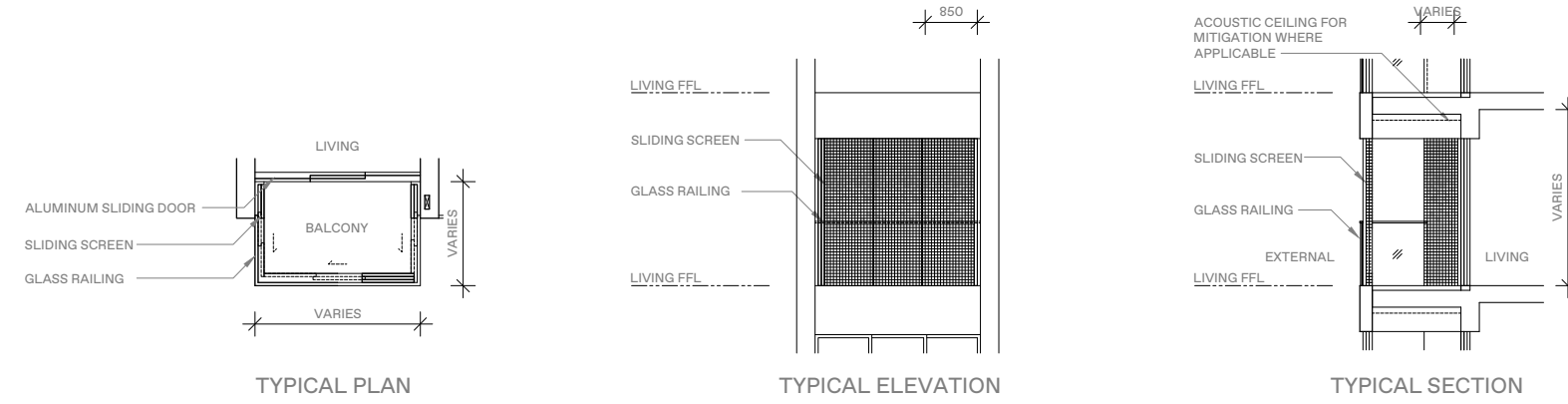
ANNEXURE A

BALCONY SCREEN

APPLICABLE FOR TYPE A2 / B2* / B3* / B4 / B4A / B5 / B5A* / B7 / B7A / B8 / B9P / B9 / C2 / C2A / C3 / P3*

Notes:

1. The balcony shall not be enclosed unless with the approved balcony screen.
2. The purchasers shall have to bear the costs of installing the balcony screen except for the units mentioned in Note 3.
3. The balcony screen will be provided in the following units:
 (1) #18-100 - #31-100, (2) #18-101 - #31-101, (3) #18-107 - #31-107, (4) #18-108 - #31-108,
 (5) #05-109 - #16-109, (6) #06-110 - #16-110, (7) #18-110 - #31-110, (8) #06-117 - #16-117, (9) #18-117 - #31-117

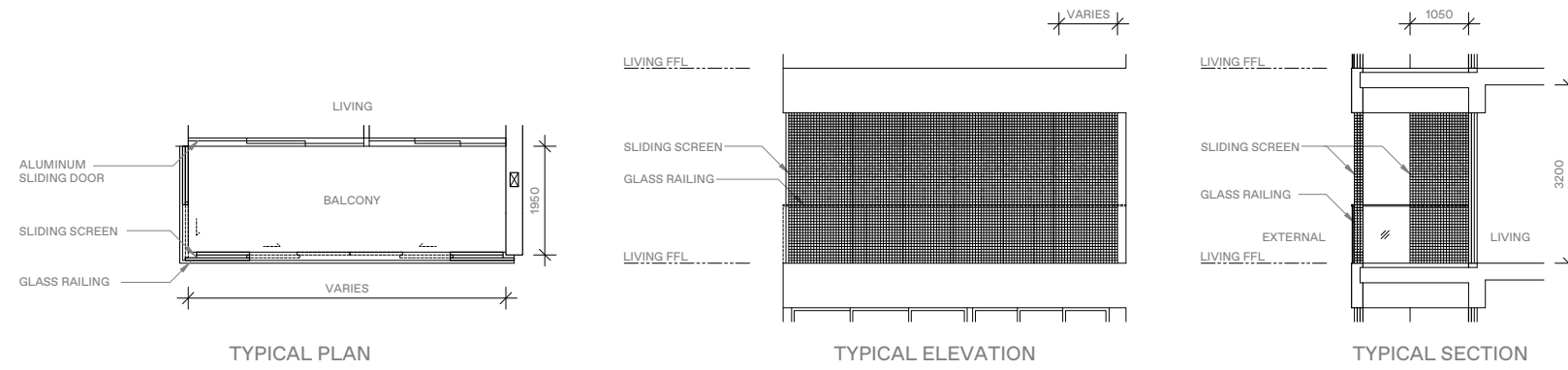


BALCONY SCREEN

APPLICABLE FOR TYPE C6 / C7 / C8

Notes:

1. The balcony shall not be enclosed unless with the approved balcony screen.
2. The purchasers shall have to bear the costs of installing the balcony screen.

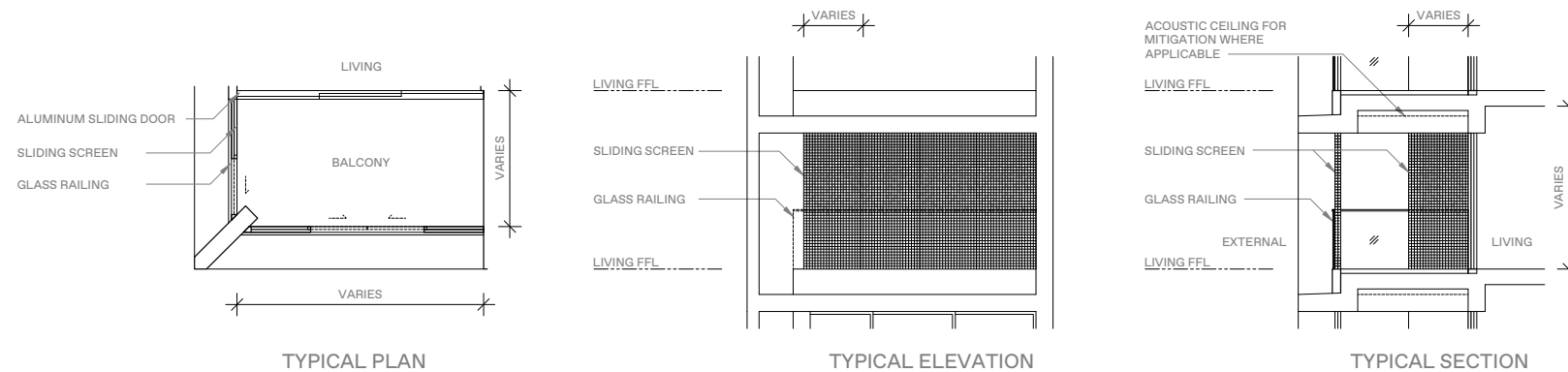


BALCONY SCREEN

APPLICABLE FOR TYPE C4P / C4 / C9* / C10* / D2P / D2 / D5

Notes:

1. The balcony shall not be enclosed unless with the approved balcony screen.
2. The purchasers shall have to bear the costs of installing the balcony screen except for the units mentioned in Note 3.
3. The balcony screen will be provided in the following units:
 (1) #05-106 - #32-106, (2) #05-111 - #32-111, (3) #06-115 - #32-115, (4) #06-116 - #32-116



DISCLAIMER: The information contained herein is subject to change and cannot form part of an offer or contract. While every reasonable care has been taken in providing this information, the developer or its agent cannot be held responsible for any inaccuracies. Whilst we believe the contents of this brochure to be correct and accurate at time of print, they are not to be regarded as statements or representations of fact. Illustrations in the brochure are artist's impressions, which serve only to give an approximate idea of the project. All artist's impressions and all plans are subject to any amendments as may be approved by the relevant authorities. The developer reserves the right to modify any parts of the building prior to project completion as approved or directed by the Planning Authorities or as the owner deems fit in its sole discretion. The developer reserves any and all copyright, design and other proprietary rights in and to this document (or any part thereof) including all or any part of the information, material or artwork contained therein. Unless otherwise expressly agreed to in writing, this document or any part thereof may not be copied, modified, distributed, reproduced or reused without the express written consent of the developer.

Developer: FE Landmark Pte. Ltd., FEC Residences Trustee Pte. Ltd. (in its capacity as Trustee-Manager of FEC Residences Trust) & FEC Retail Trustee Pte. Ltd. (in its capacity as Trustee-Manager of FEC Retail Trust) • Licence No.: C1463 • Tenure: 99 years commencing from 29 Nov 2021 • Encumbrances: (i) Caveat IH/21880E in favour of DBS Bank Ltd. (ii) Mortgage executed in escrow in favour of DBS Bank Ltd. • Land Description: Lot No. 2843M & 2852K of MK 16 at Jalan Anak Bukit • Expected Vacant Possession Date: 31 Dec 2028 • Expected Legal Completion Date: 31 Dec 2031